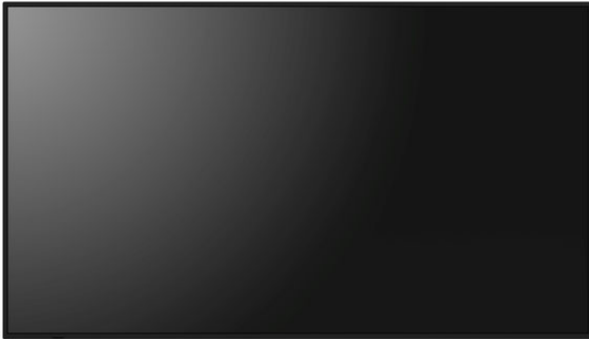


LCD MONITOR



PN-M432
PN-M502
PN-P436
PN-P506

MODEL

Dismantle Instruction

Table of contents

1. Scope	3
2. Tools for dismantling	3
3. Dismantle Procedure	3
4. Batteries	4
5. Disassembly	5
PN-M432 / P436	7
PN-M502 / P506	18
6. Parts List	27

1. Scope

This document describes dismantling instruction according to Annex VII of Directive 2012/19/EU.

2. Tools for dismantling

- Screw Driver
- Nipper

3. Dismantle Procedure

This product can be dismantled by below steps.

1. Remove Back covers
2. Remove Printed circuit boards

4. Batteries

This model uses only AAA battery for remote control.
Battery can easily be removed.



5. Disassembly

CHAPTER 6. DISASSEMBLY AND ASSEMBLY

1. CAUTION FOR WORK

- Before you disassemble the set, turn off power and pull out the power plug.
- Use the proper screwdriver. If oversize or undersize screwdriver is used, screws may be damaged.
- Assembly is reversed process of disassembly.
- Adhesive recommended spare parts that are used by peeling off tapes and backing materials are reused if they have sufficient adhesion even after peeling, Replace the part with a new part that is weak in adhesion and difficult to reuse.
Replace parts with new ones that are conductive and hazardous if peeled off.
Parts that are not targeted for recommended spare parts, such as insert-type clampers, are reused.

2. RECOMMENDED SPARE PARTS LIST

Please refer to the Document

“Recommended Spare Parts List_ M432_M502_P436_P506”.

3. PARTS TO BE REMOVED

When replacing parts, remove the structural parts that have a "V" check mark.

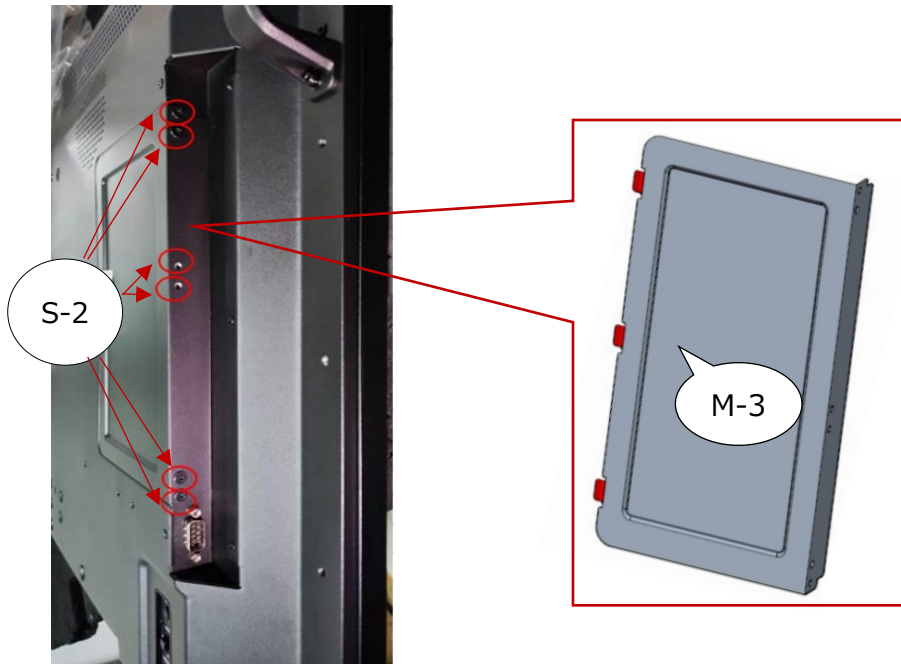
Replacing part		Main BD	Power BD	T-con BD	ConverterBD	Key BD	IR BD	Speaker	FAN A	FAN B	AC Inlet	RS-232C	Panel
Structural part		E-1	E-2	E-3	E-4	E-5	E-6	E-7	E-8	E-8	E-9	W-	L-1
Handle	M-1												V
Back Cover	M-2	V	V	V	V	V	V	V	V	V	V	V	V
Option Cover	M-3	V	V	V	V	V	V	V	V	V	V	V	V
Bezel Top	M-5												V
Bezel Bottom	M-6												V
IO Cover	M-7	V											V
T-Con Cover				V									V
Chassis													V
AC Bracket	M-16										V		V
Function Cover	M-8					V							V
Key Bracket	M-9					V							V
IR Receiver	M-10						V						V
Duct	M-12	V								V			V
SDM Rail Bracket	M-13	V	V	V	V	V	V	V	V	V	V	V	V
Guide Rail	M-14												V

4. DISASSEMBLY OF M432/P436

1) Remove the COVER OPTION

M-3: COVER OPTION

Fastening torque S-2: $4 \pm 1 \text{kgf} \cdot \text{cm}$



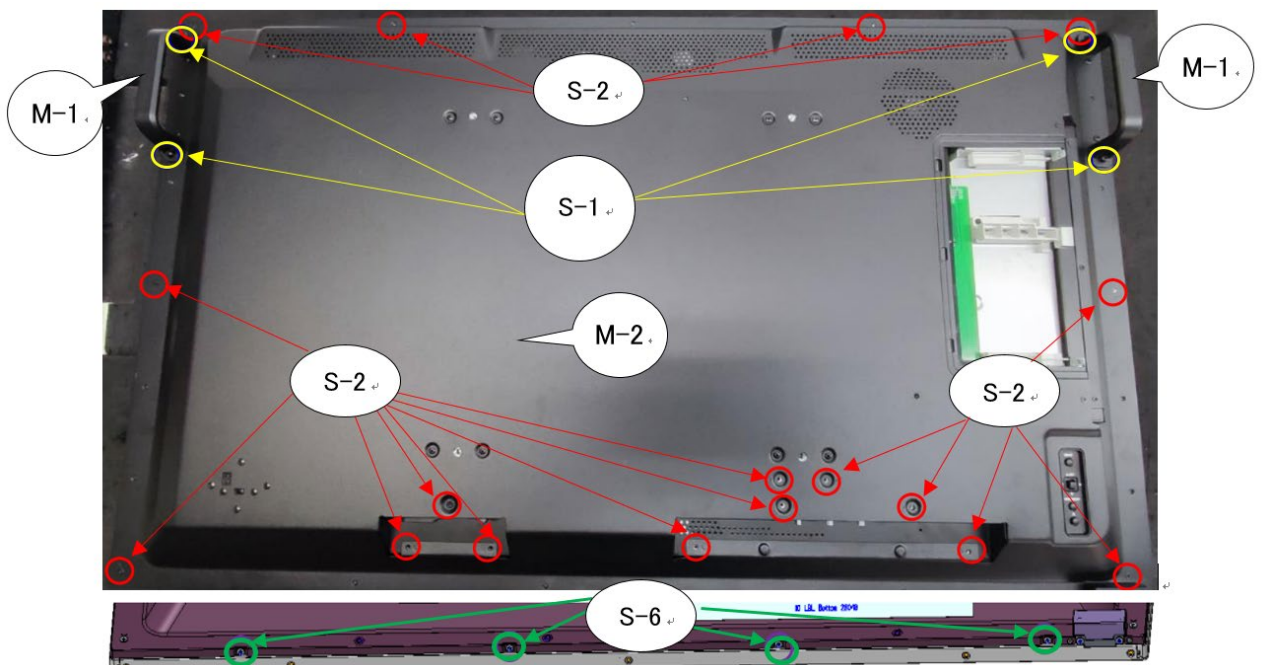
2) Remove the HANDLE, BACK COVER

M-1: HANDLE, M-2: BACK COVER

Fastening torque S-1: $12 \pm 2 \text{kgf} \cdot \text{cm}$

S-2: $4 \pm 1 \text{kgf} \cdot \text{cm}$

S-6: $4 \pm 1 \text{kgf} \cdot \text{cm}$



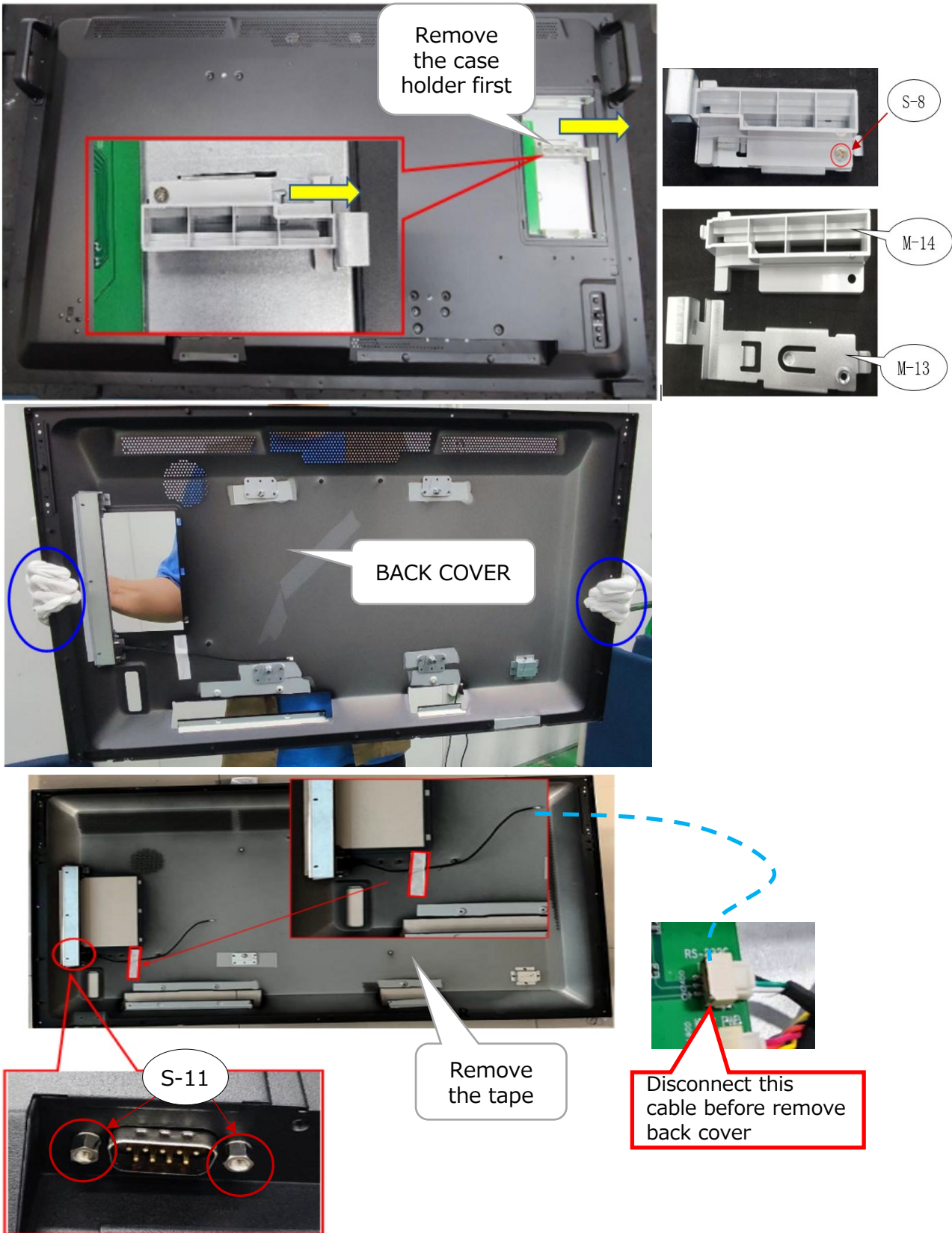
3) Remove the Case holder, RS232 cable

M-13: SMD RAIL BRACKET

M-14: GUIDE RAIL B

Note:

The connector of the RS232 cable is connected to the BACK COVER. Please do not pull on the connector when disassembling.



Fastening torque S-11: $4 \pm 0.5 \text{ kgf} \cdot \text{cm}$

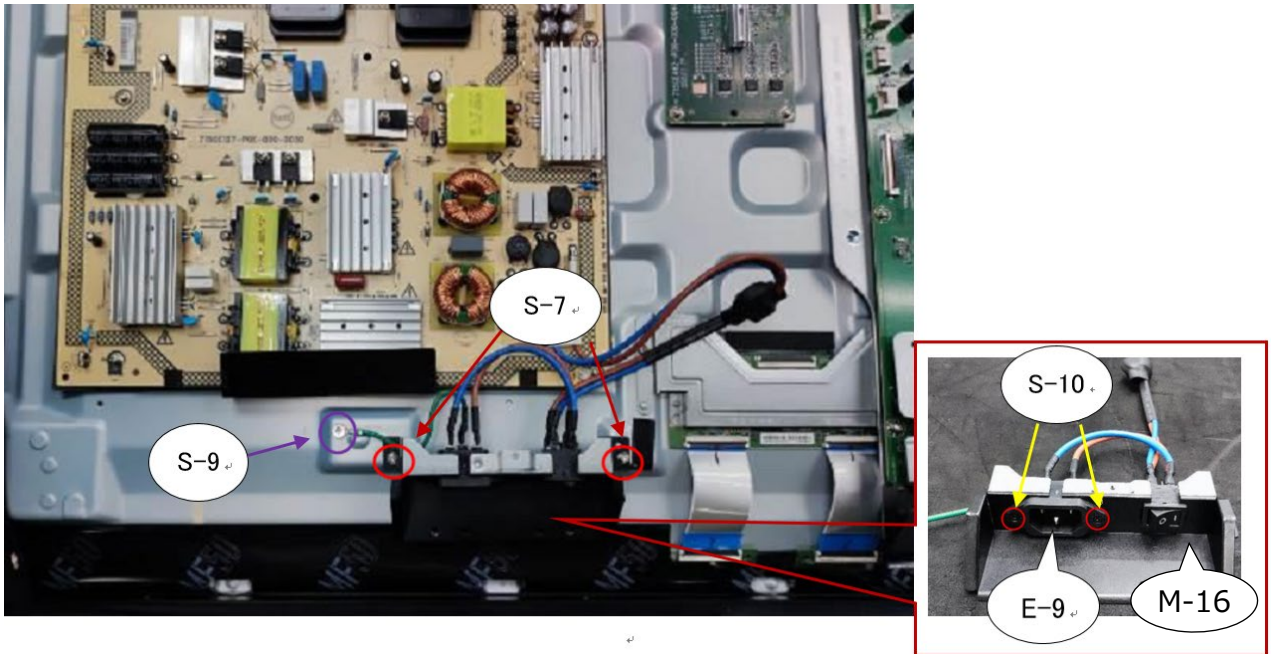
S-8: $4 \pm 1 \text{ kgf} \cdot \text{cm}$

5) Remove the INLET

E-9: AC SOCKET

M-16: AC BRACKET

Fastening torque S-9: $6 \pm 1 \text{kgf} \cdot \text{cm}$
S-7: $4 \pm 1 \text{kgf} \cdot \text{cm}$
S-10: $4 \pm 1 \text{kgf} \cdot \text{cm}$

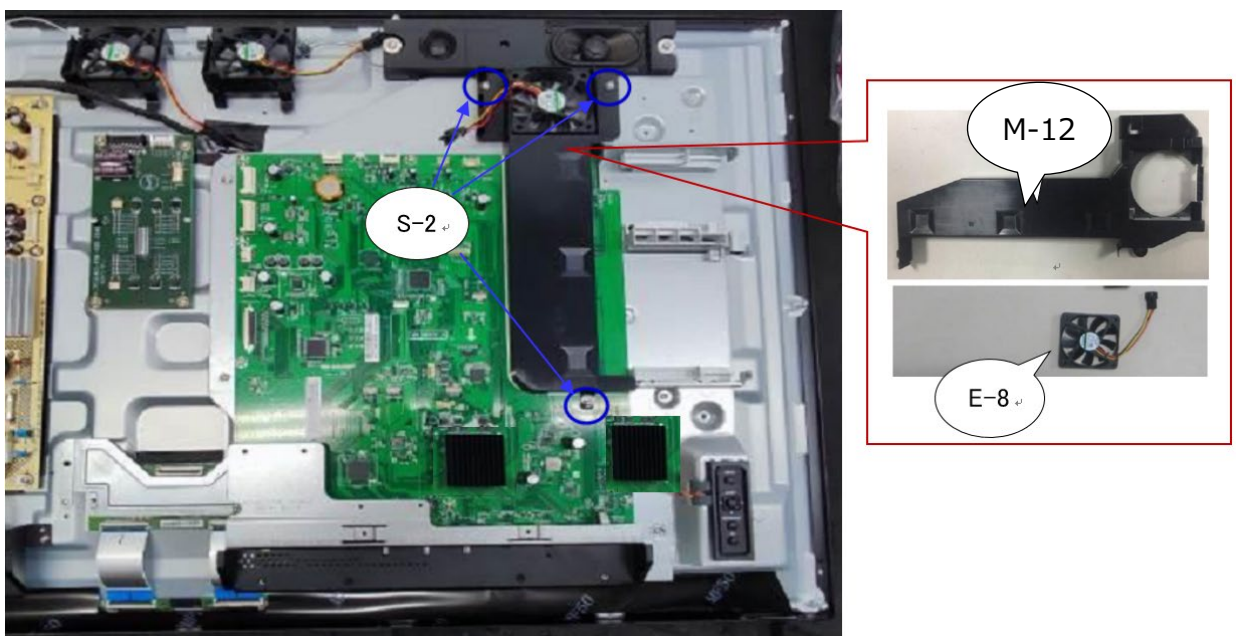


6) Remove the FAN

E-8: FAN

M-12: DUCT BRACKET

Fastening torque S-2: $4 \pm 1 \text{kgf} \cdot \text{cm}$



7) Remove the MAIN BD, POWER BD, CONVERTER BD

E-1: MAIN board

E-2: PWB board

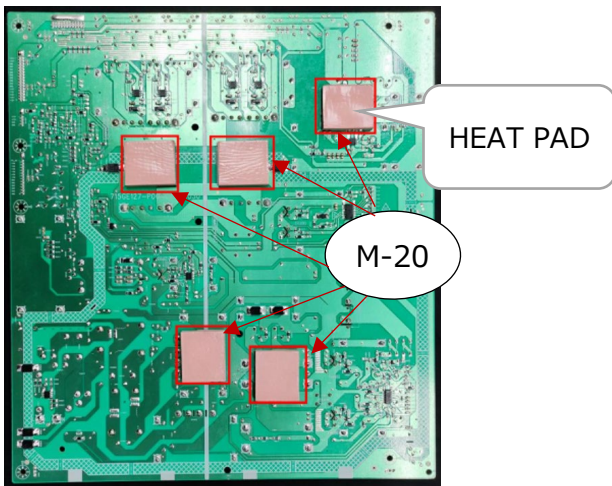
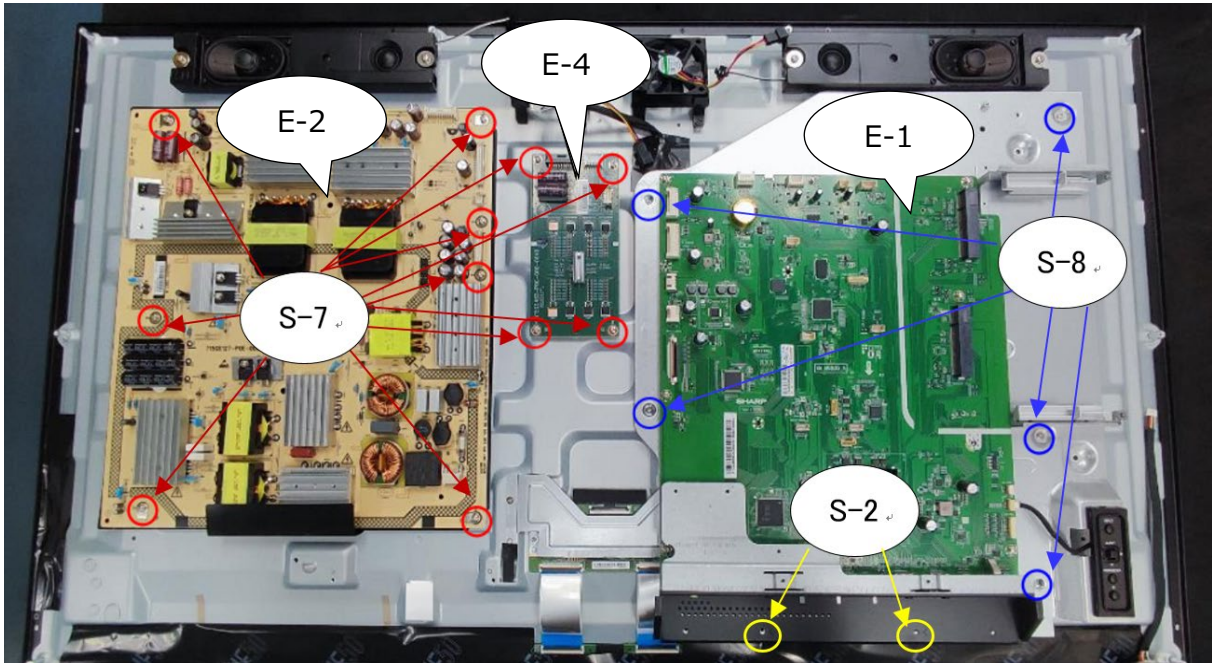
E-4: CONVERTER board

M-20: RUBBER PAD A

Fastening torque : S-7: $4 \pm 1 \text{kgf} \cdot \text{cm}$

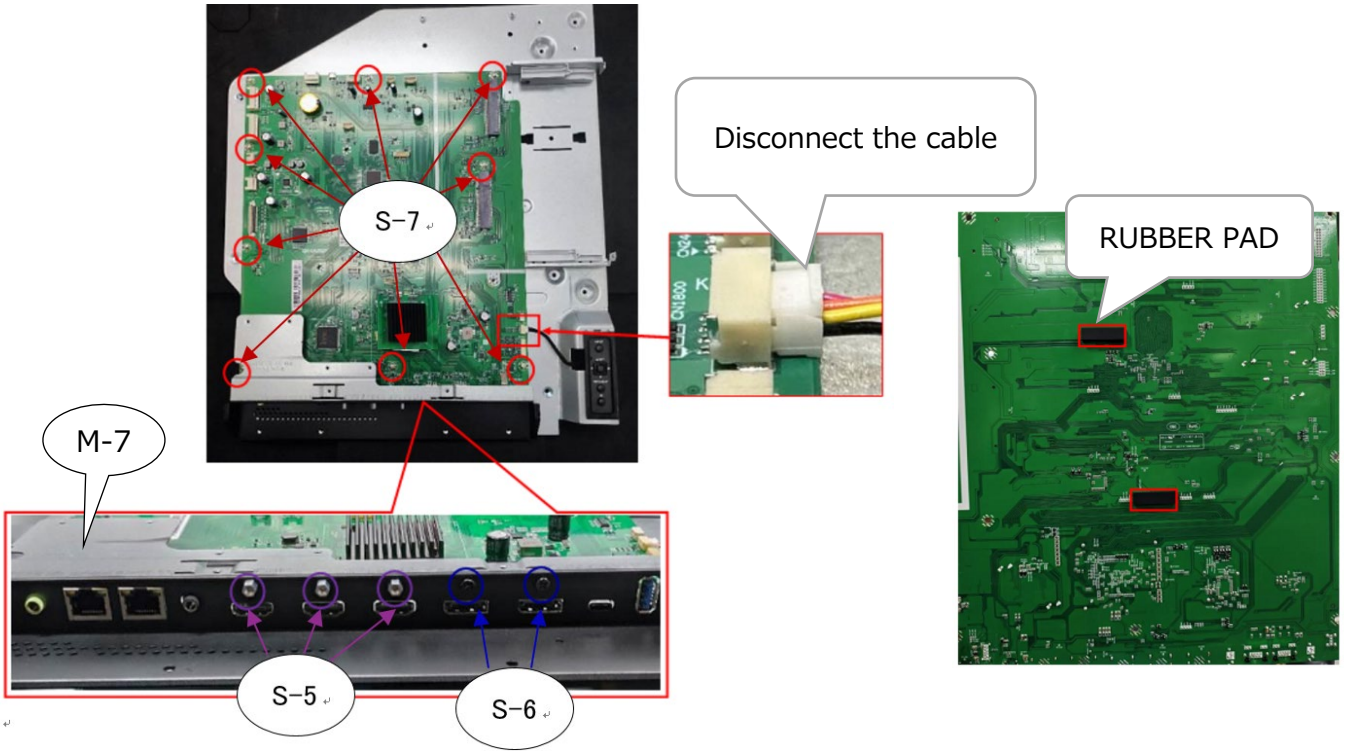
S-8: $4 \pm 1 \text{kgf} \cdot \text{cm}$

S-2: $4 \pm 1 \text{kgf} \cdot \text{cm}$



M-7: COVER IO

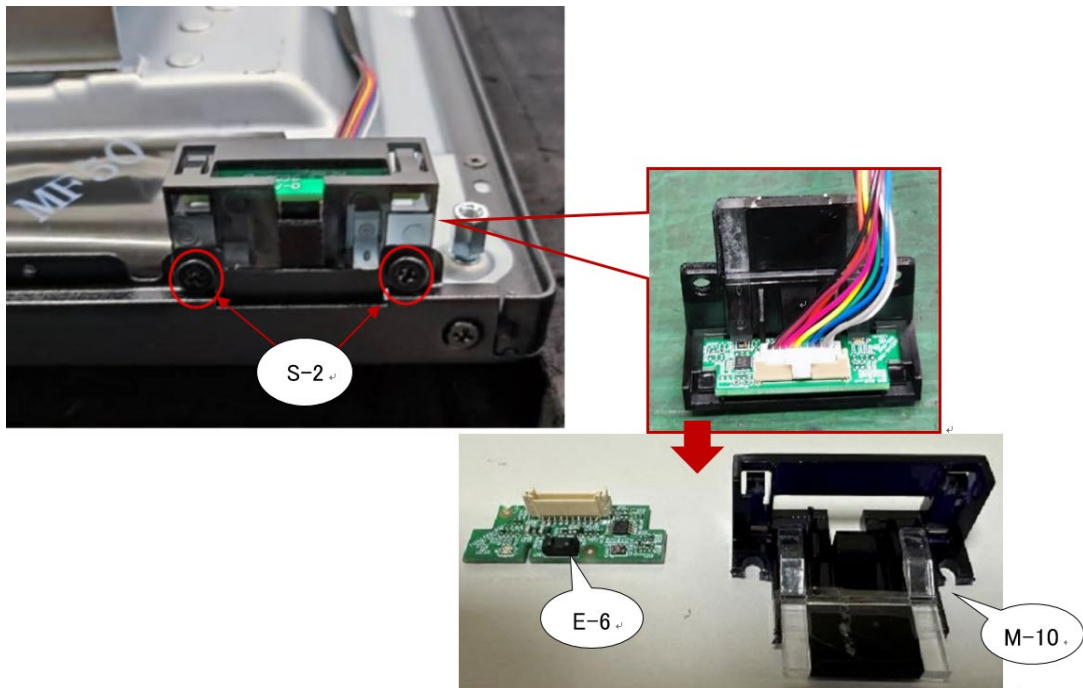
Fastening torque S-7: $4 \pm 1 \text{kgf} \cdot \text{cm}$
S-5: $4.5 \pm 0.5 \text{kgf} \cdot \text{cm}$
S-6: $4 \pm 1 \text{kgf} \cdot \text{cm}$



8) Remove the IR BD

E-6: IR Board
M-10: IR RECEIVER (LENS)

Fastening torque S-2: $4 \pm 1 \text{kgf} \cdot \text{cm}$



9) Remove the SPEAKER, FAN

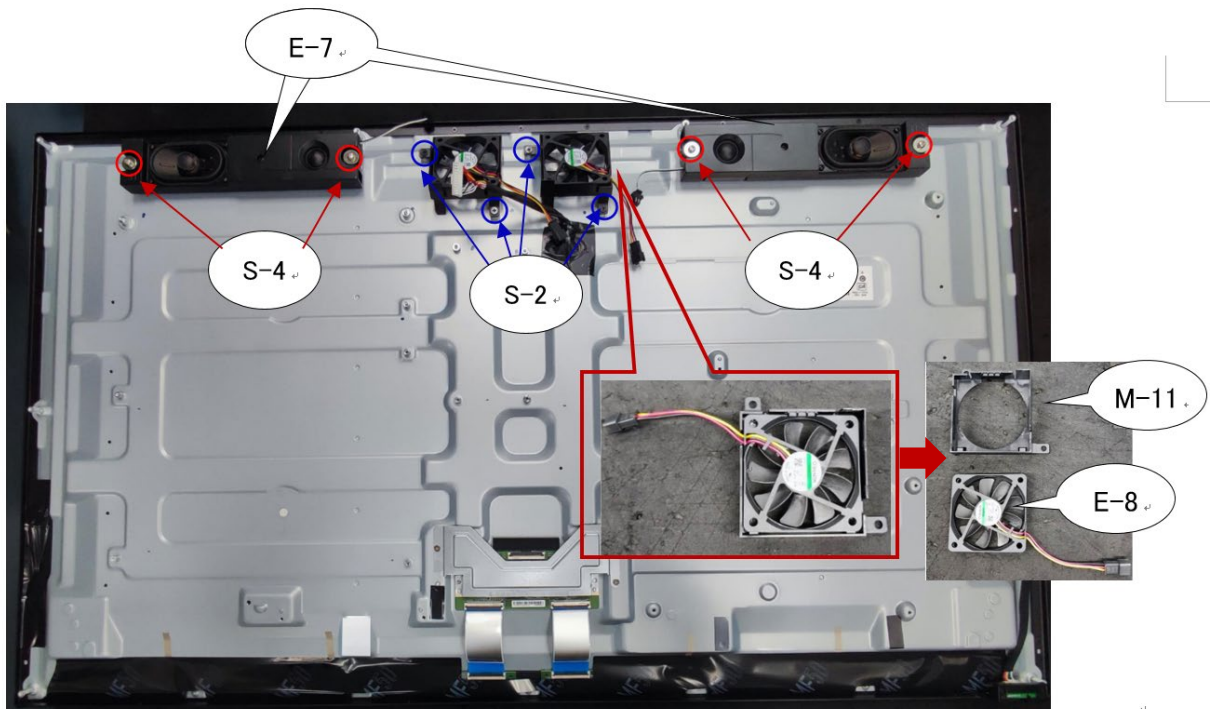
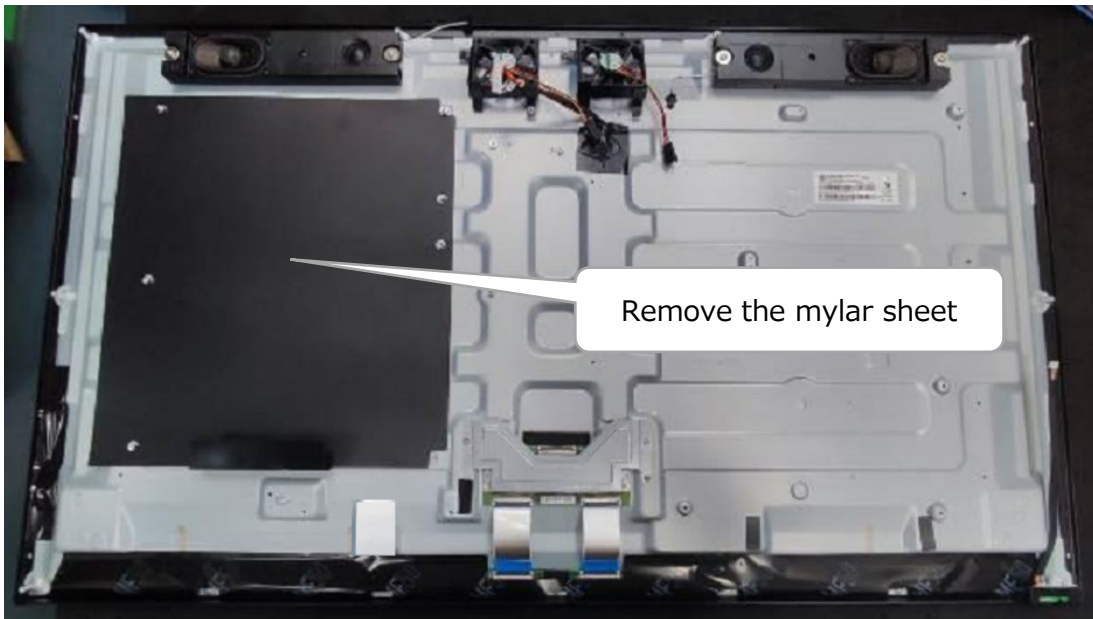
E-7: SPEAKER

E-8: FAN

M-11: FAN BRACKET

Fastening torque S-4: $4 \pm 1 \text{kgf} \cdot \text{cm}$

S-2: $4 \pm 1 \text{kgf} \cdot \text{cm}$



10) Remove the GUIDE RAIL, KEY BD

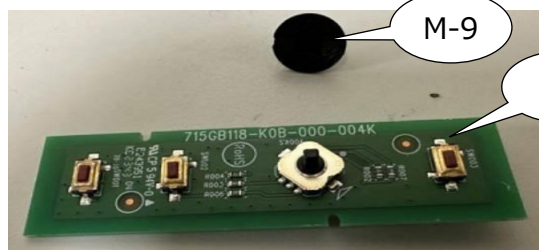
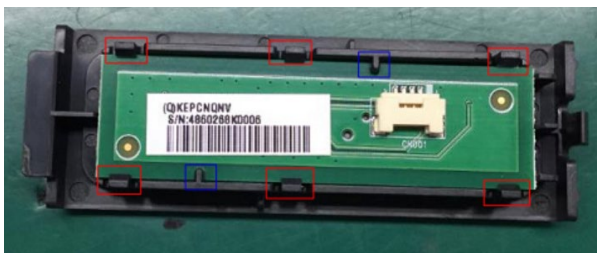
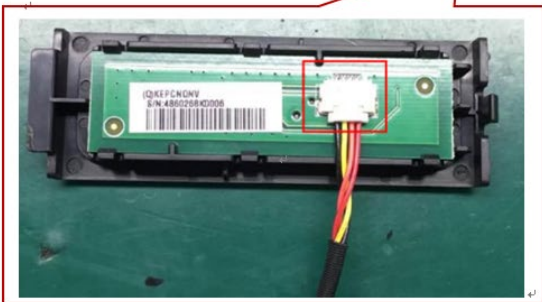
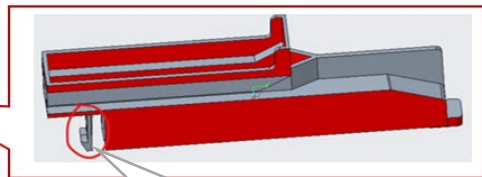
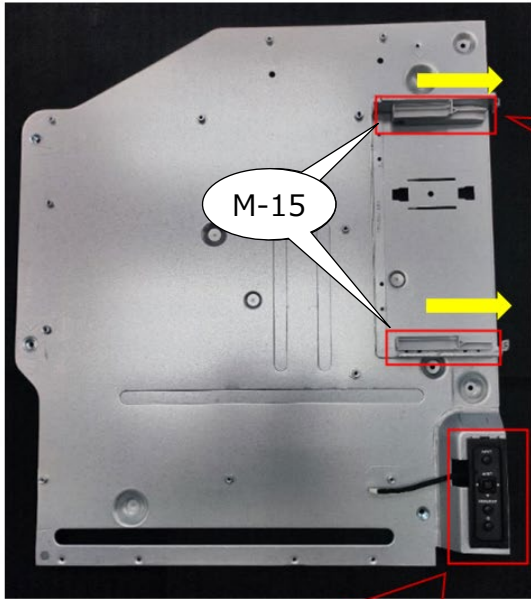
M-15: GUIDE RAIL A

R-4: KEY LABEL

M-8: COVER KEY

M-9: KEY BRACKET

E-5: KEY Board



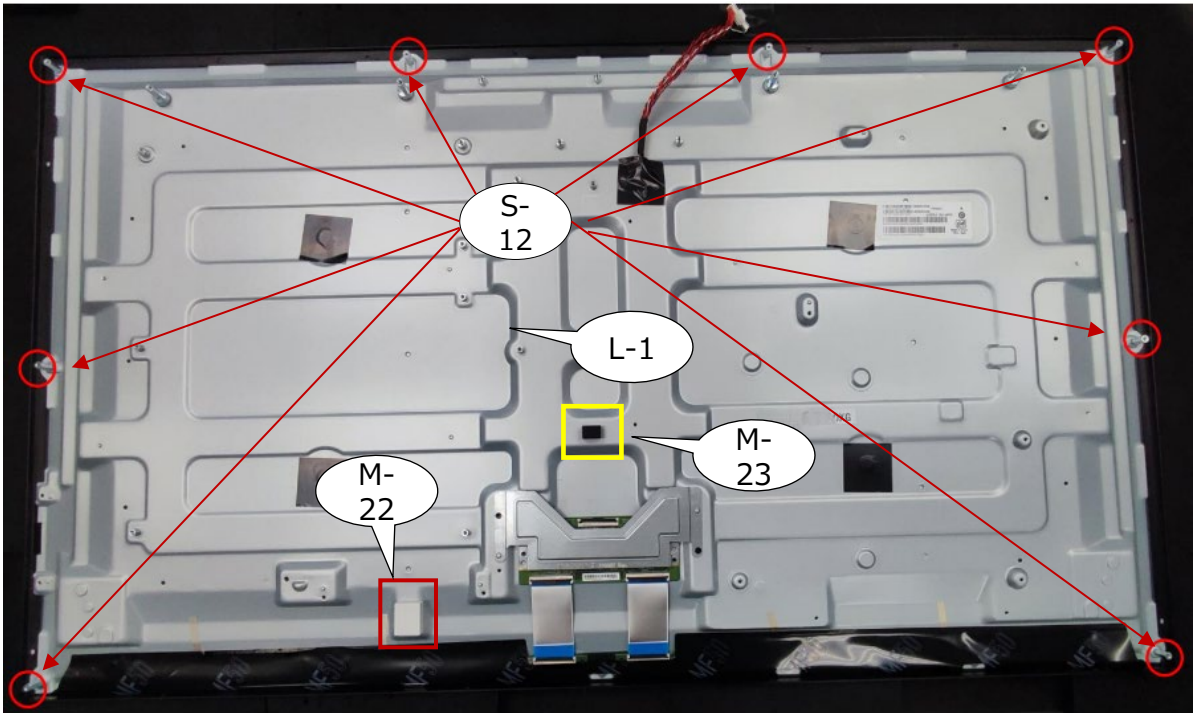
11) Remove the PANEL

L-1: PANEL

M-22: RUBBER PAD C

M-23: RUBBER PAD D

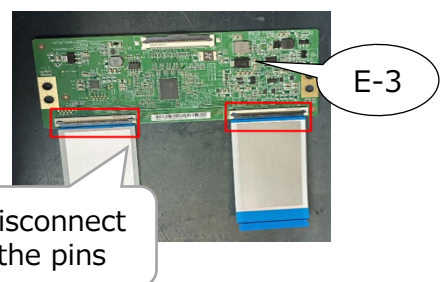
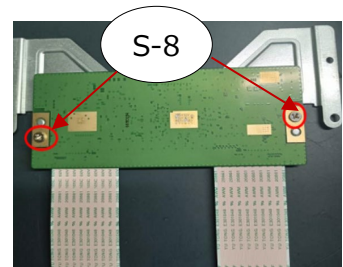
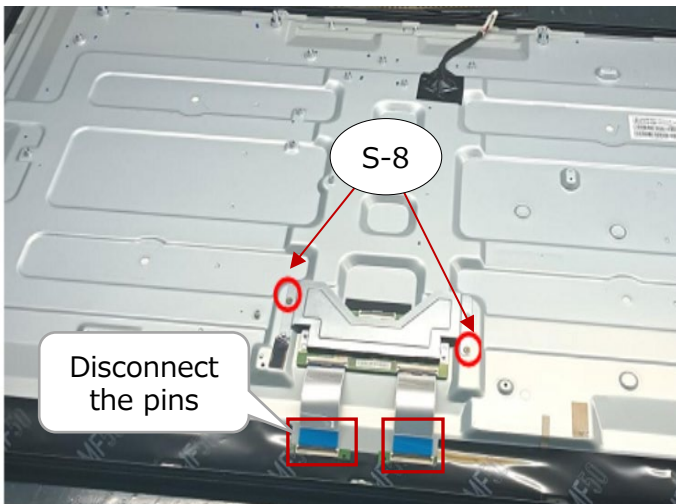
Fastening torque S-12: $4.5 \pm 0.5 \text{kgf} \cdot \text{cm}$



12) Remove the T-CON

E-3: T-CON BD

Fastening torque S-8: $3.0 \pm 0.5 \text{kgf} \cdot \text{cm}$

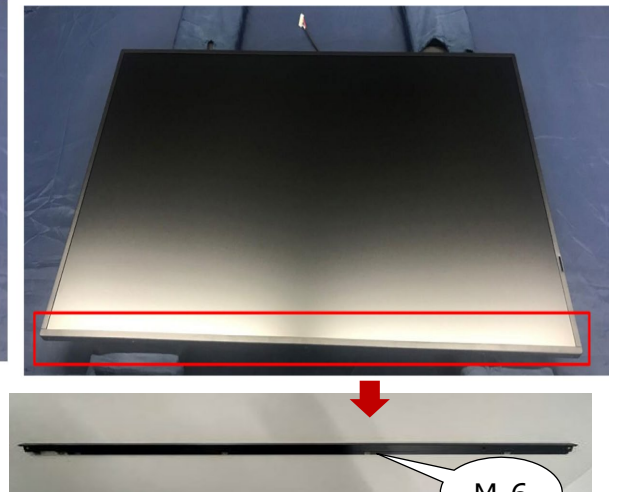
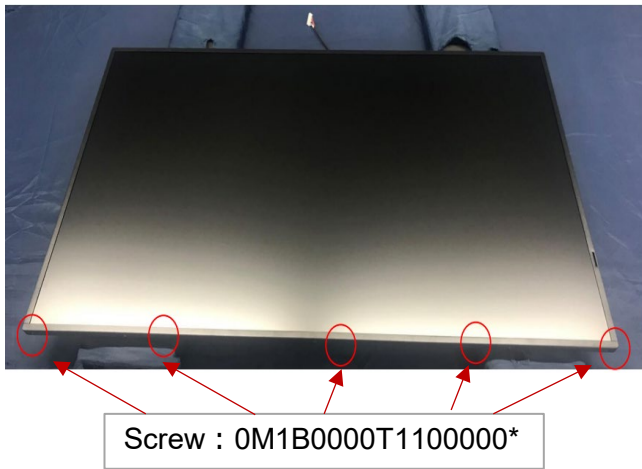
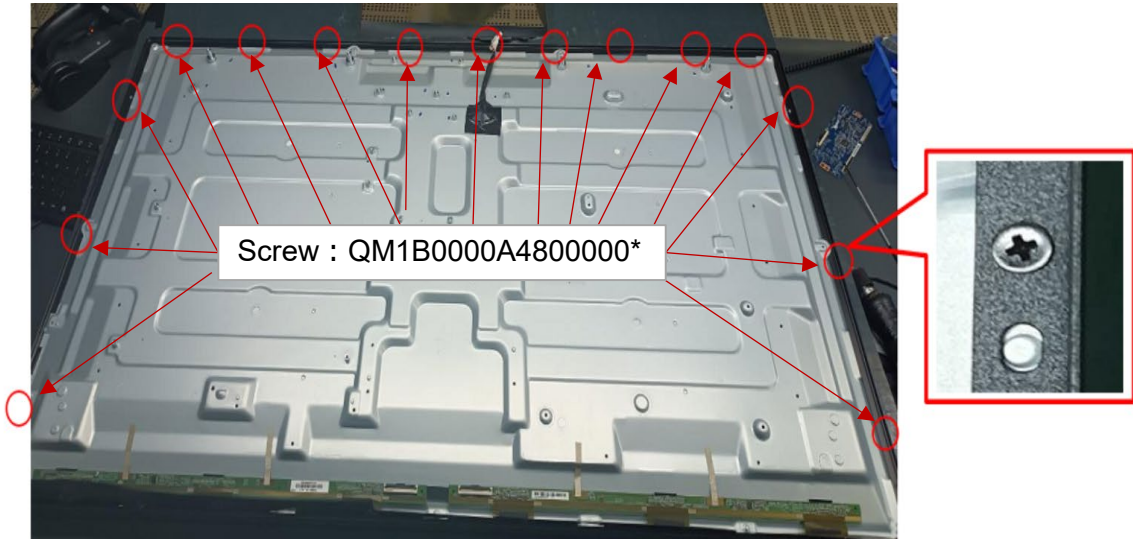


13) Remove the Bezel




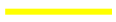







M-5 : BEZEL TOP

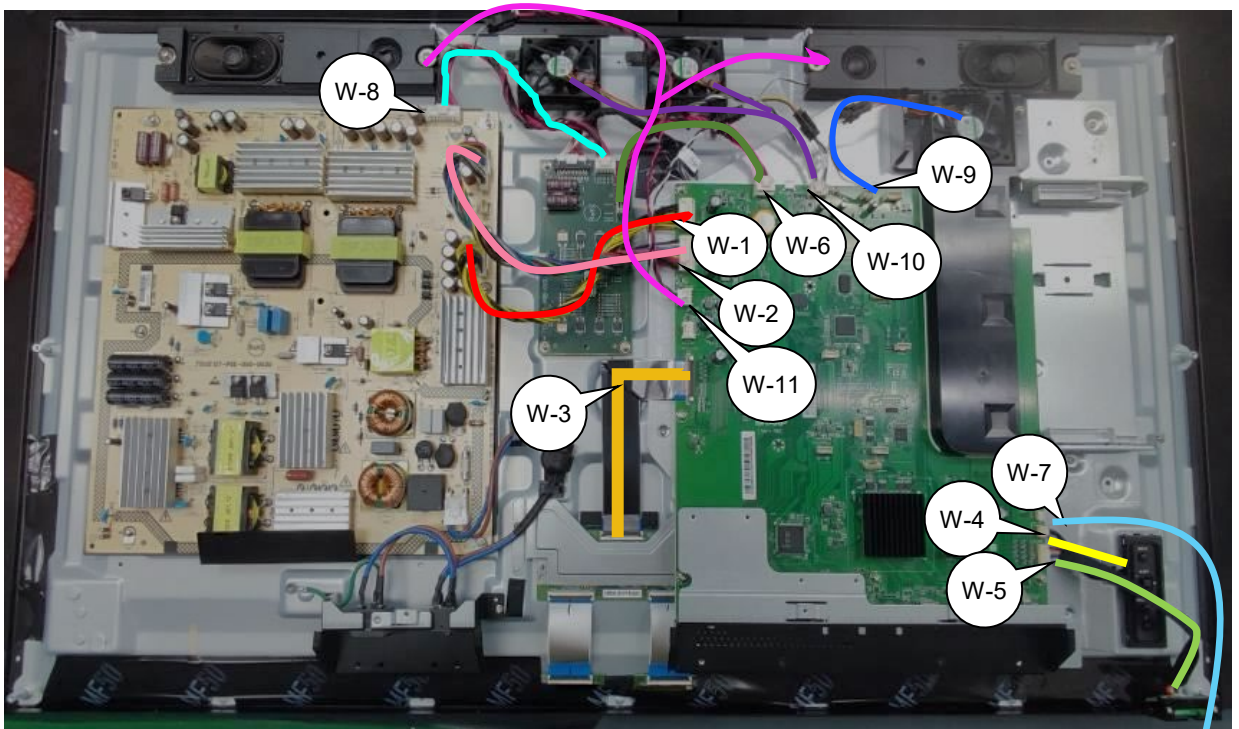
M-6 : BEZEL BOTTOM

Fastening torque : $3 \pm 0.5 \text{kgf} \cdot \text{cm}$

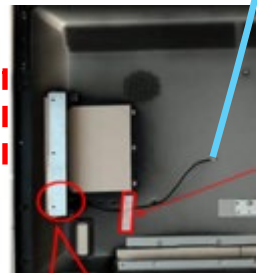


14) Wiring diagram

W-1		MAIN PWB ↔ POWER PWB
W-2		MAIN PWB ↔ POWER PWB
W-3		MAIN PWB ↔ T-CON PWB
W-4		MAIN PWB ↔ KEY PWB
W-5		MAIN PWB ↔ IR PWB
W-6		MAIN PWB ↔ LD PWB
W-7		MAIN PWB ↔ RS232
W-8		POWER PWB ↔ CONVERTER PWB
W-9		MAIN PWB ↔ FAN1
W-10		MAIN PWB ↔ FAN2
W-11		MAIN PWB ↔ SPEAKER



RS232
in rear
cover

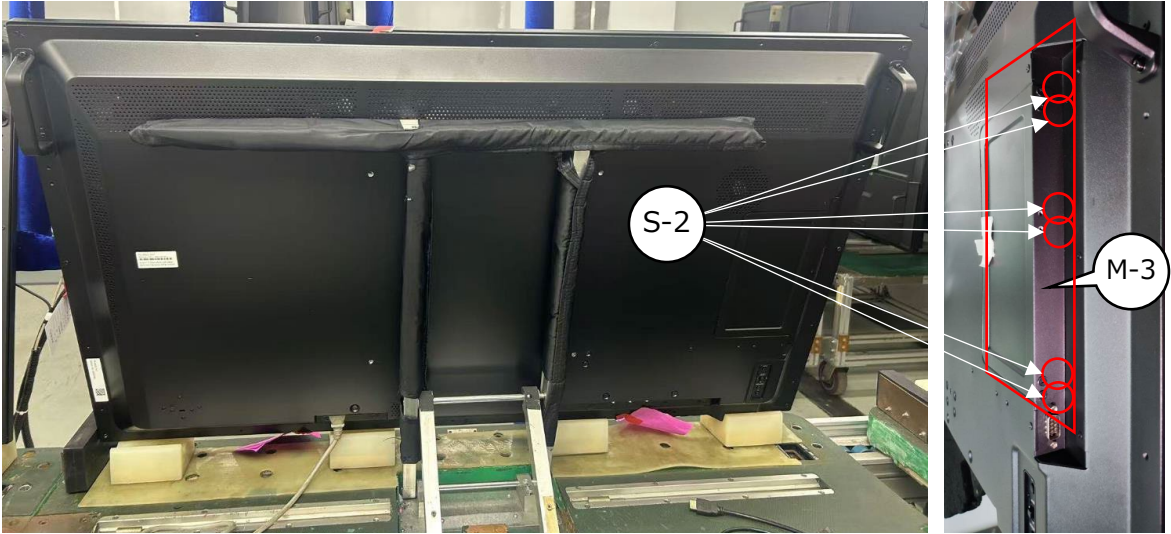


3. DISASSEMBLY OF M502/P506

1) Remove the COVER OPTION

M-3: COVER OPTION

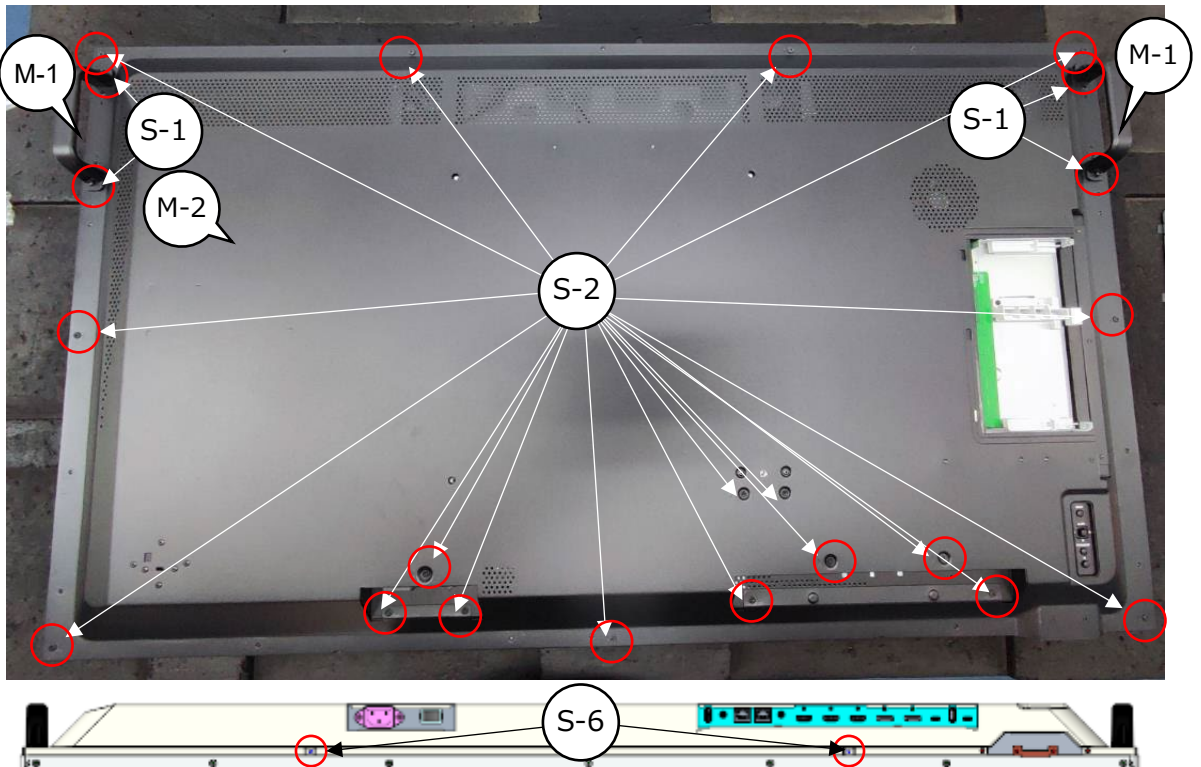
Fastening torque S-2: $4 \pm 1 \text{kgf} \cdot \text{cm}$



2) Remove the HANDLE and BACK COVER

M-1: HANDLE, M-2: BACK COVER

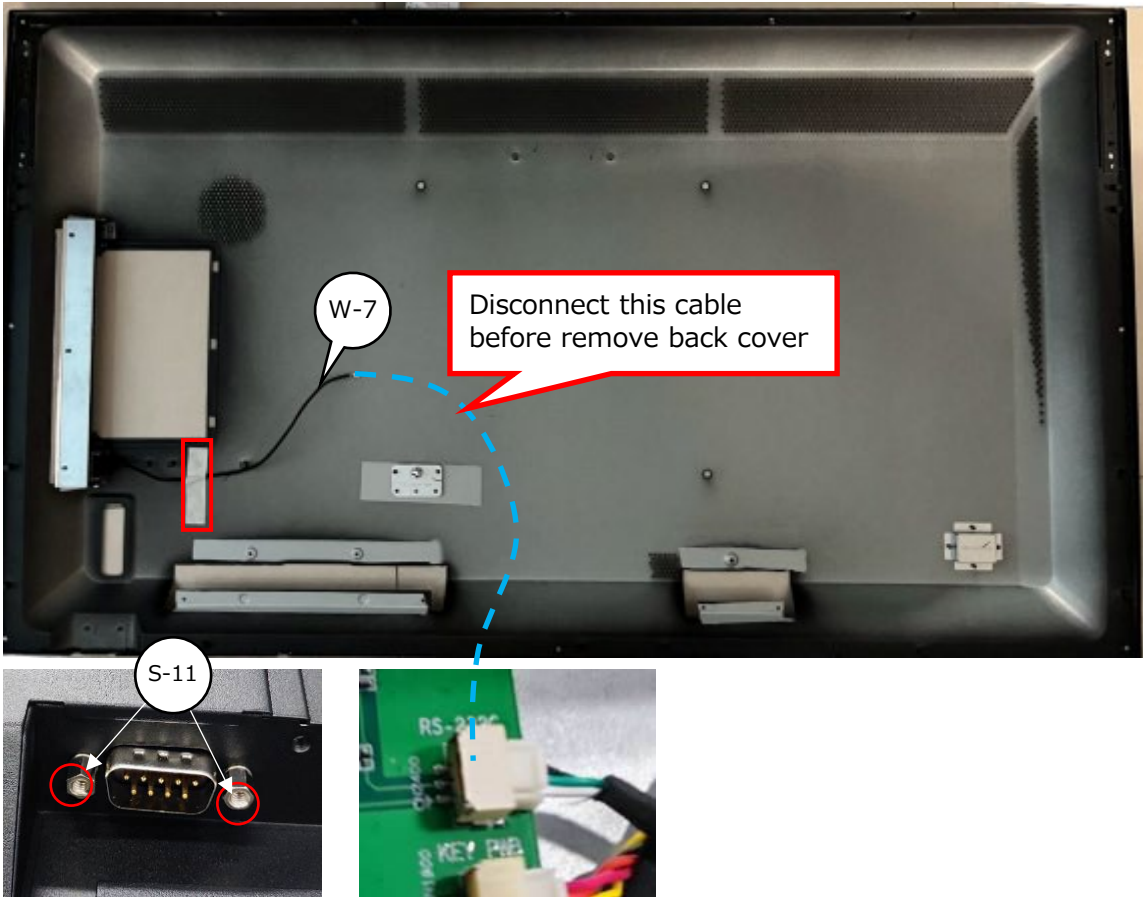
Fastening torque S-1: $12 \pm 2 \text{kgf} \cdot \text{cm}$, S-2, S-6: $4 \pm 1 \text{kgf} \cdot \text{cm}$



3) Remove the RS232

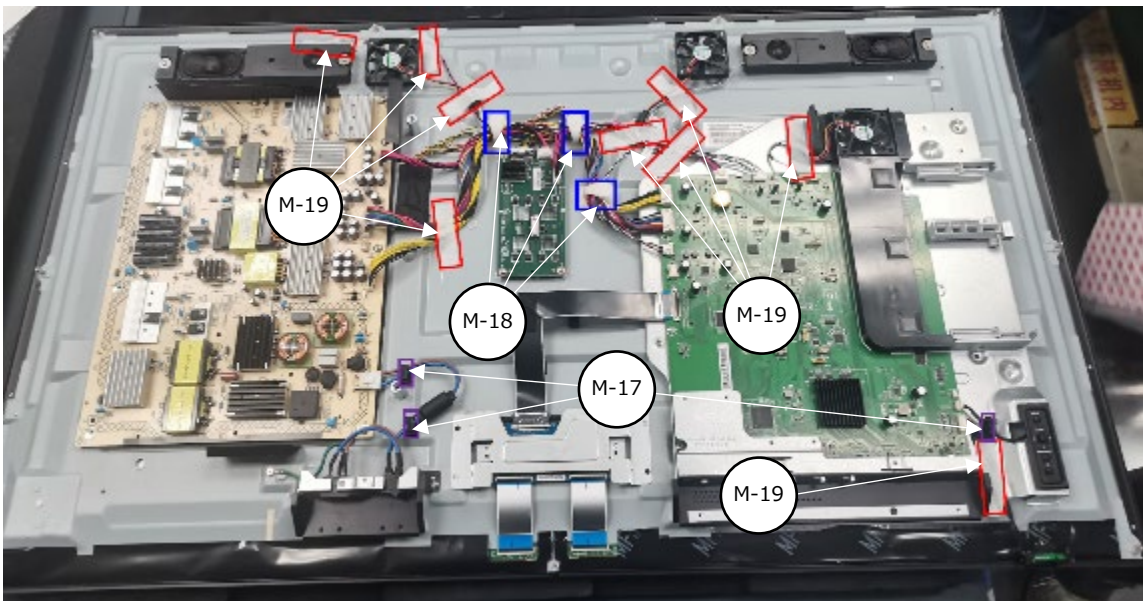
W-7: RS232 Cable

Fastening torque S-11: $4.5 \pm 0.5 \text{ kgf} \cdot \text{cm}$



4) Remove the WIRE CLIP and Fixing tape

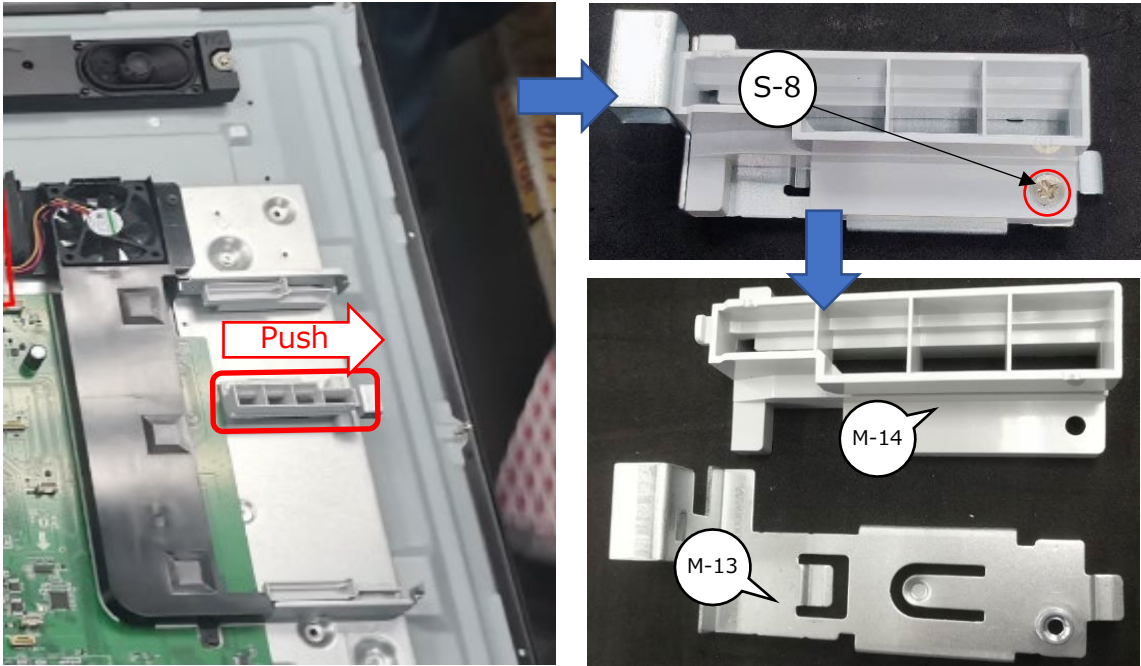
M-17: WIRE CLIP BK, M-18: WIRE CLIP WH, M-19: TAPE



5) Remove the SMD RAIL BRACKET and GUIDE RAIL B

M-13: SMD RAIL BRACKET, M-14: GUIDE RAIL B

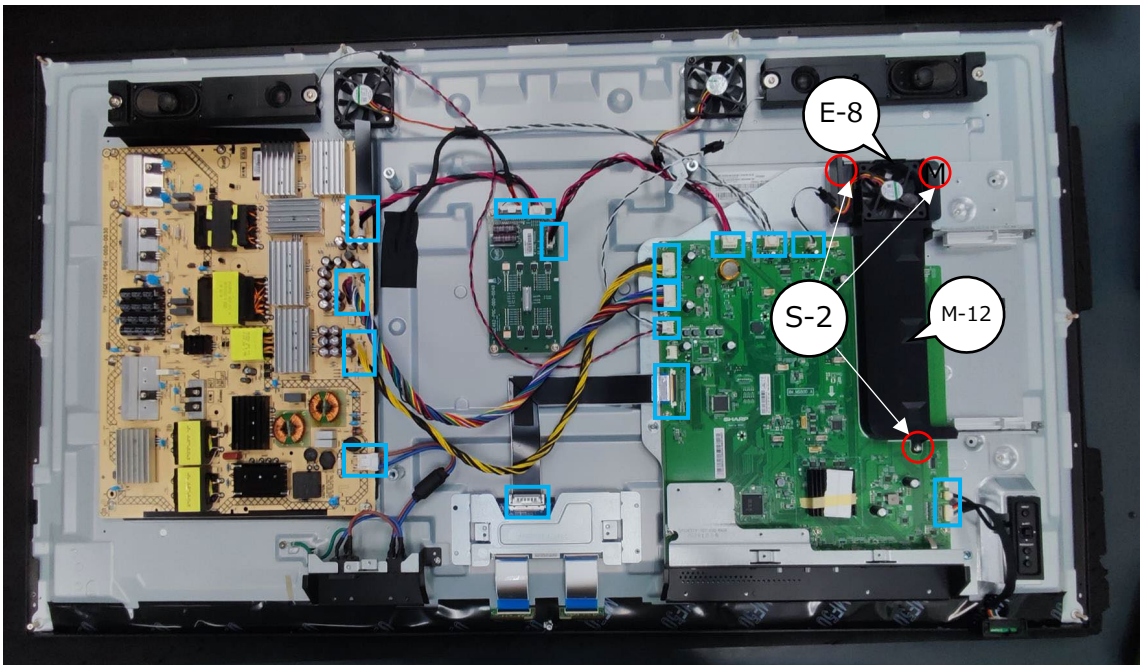
Fastening torque S-8: $4 \pm 1 \text{kgf} \cdot \text{cm}$



6) Disconnect the cable, Remove the FAN

E-8: FAN, M-12: DUCT BRACKET

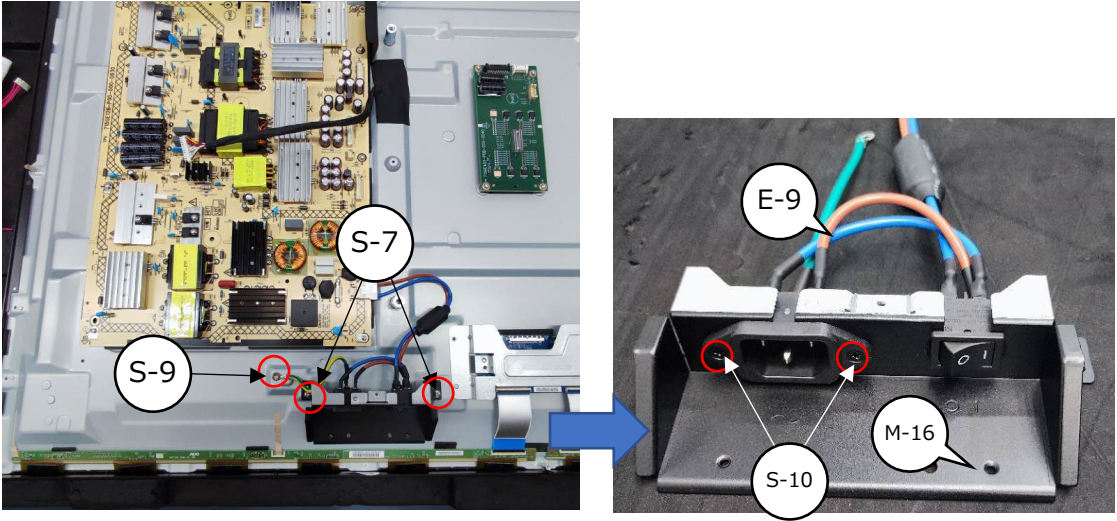
Fastening torque S-2: $4 \pm 1 \text{kgf} \cdot \text{cm}$



7) Remove the AC INLET

E-9: AC SOCKET, M-16: AC BRACKET

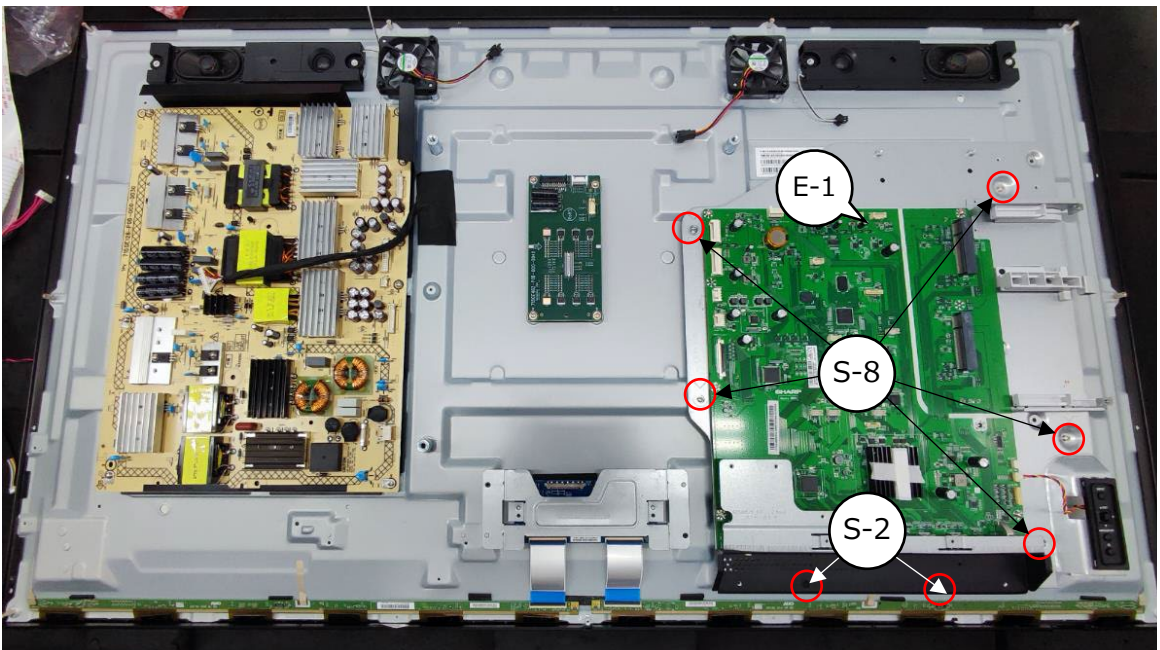
Fastening torque S-L7: $4 \pm 1 \text{kgf} \cdot \text{cm}$, S-9: $6 \pm 1 \text{kgf} \cdot \text{cm}$, S-10: $4 \pm 1 \text{kgf} \cdot \text{cm}$



8) Remove the Main BD

E-1: Main BD

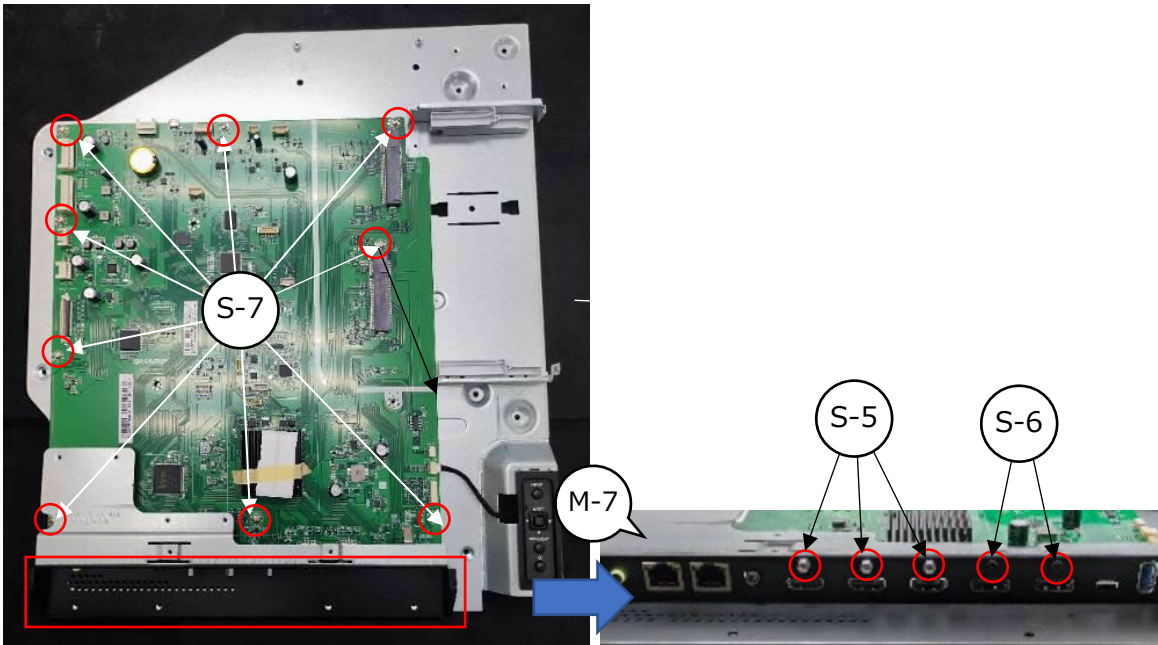
Fastening torque S-2, S-8: $4 \pm 1 \text{kgf} \cdot \text{cm}$



9) Remove the Cover IO

M-7: Cover IO

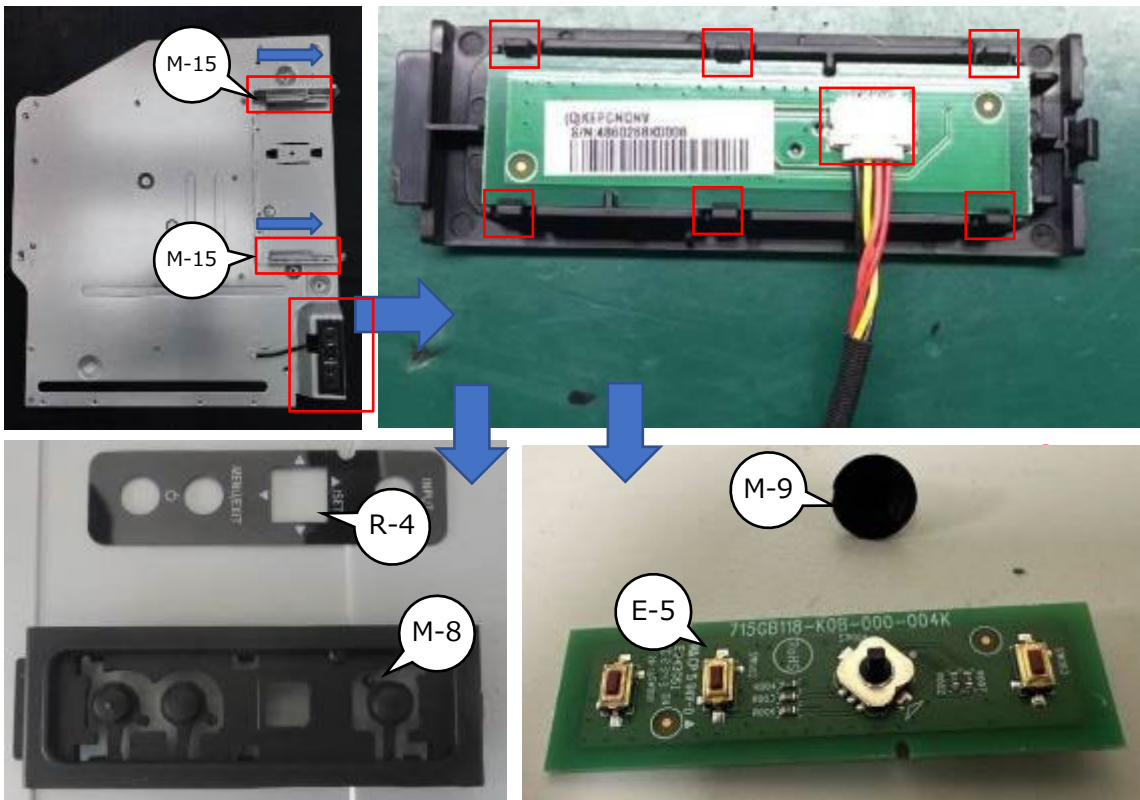
Fastening torque S-5: $4.5 \pm 0.5 \text{kgf} \cdot \text{cm}$, S-6, S-7: $4 \pm 1 \text{kgf} \cdot \text{cm}$



10) Remove the GUIDE RAIL and KEY BD

E-5: KEY BD, M-15: GUIDE RAIL A

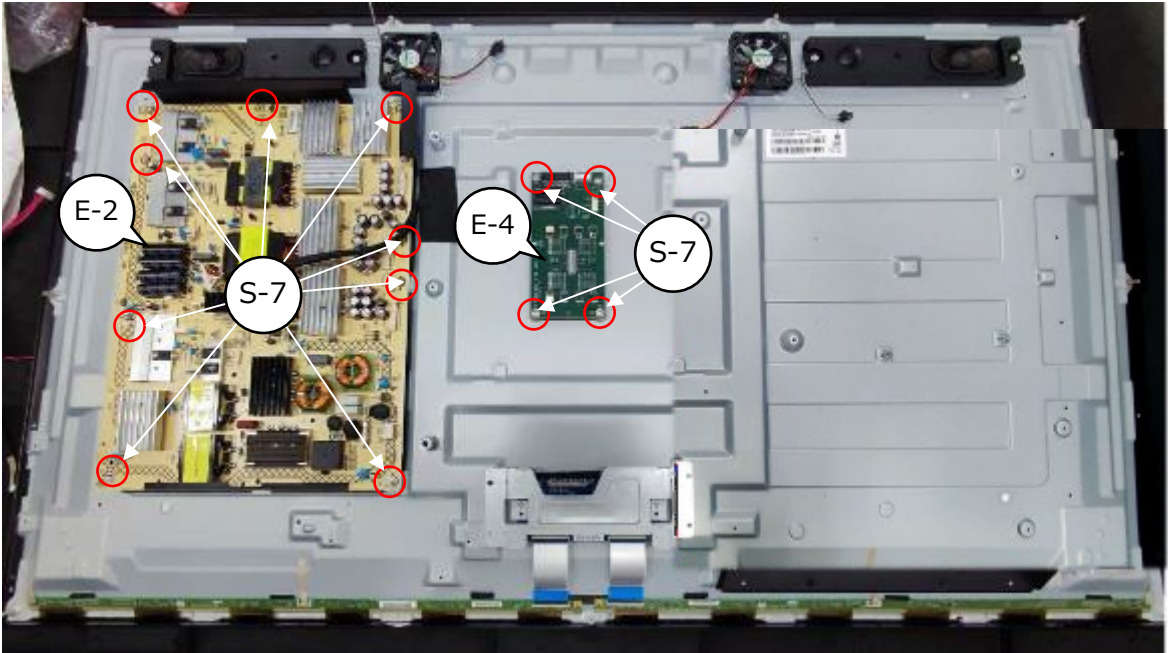
R-4: KEY LABEL, M-8: COVER KEY, M-9: KEY BRACKET



11) Remove the POWER PWB and the CONVERTER BD

E-2: POWER PWB, E-4: CONVERTER BD

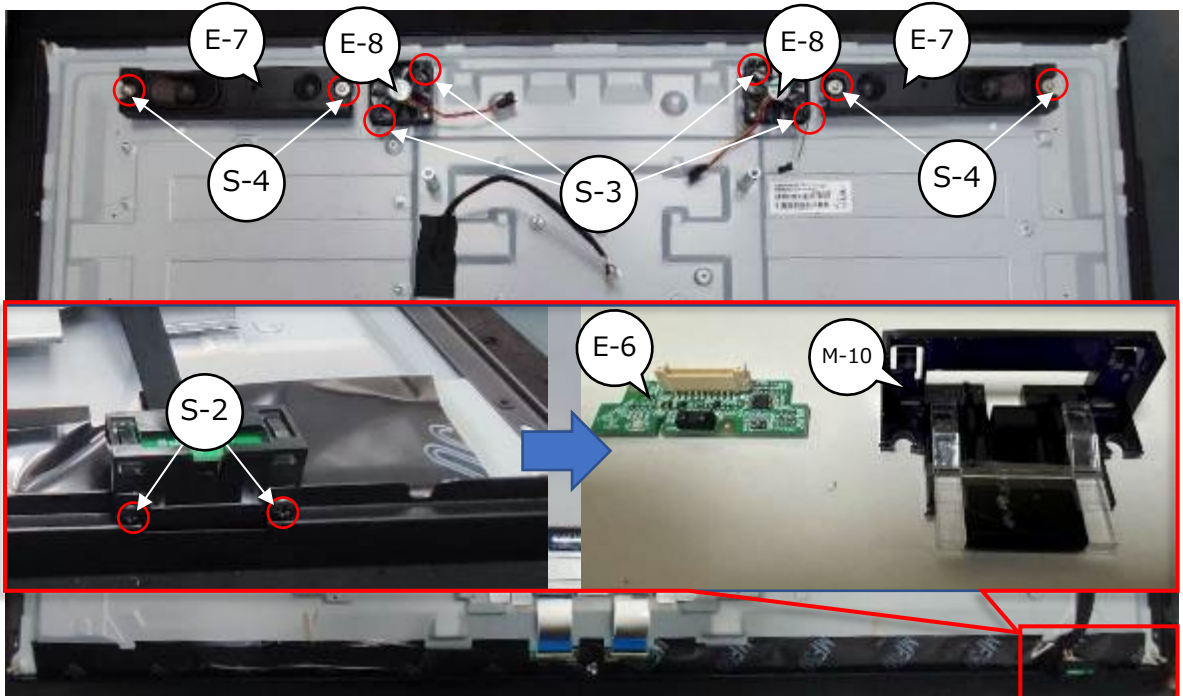
Fastening torque S-7: $4 \pm 1 \text{kgf} \cdot \text{cm}$



12) Remove IR PWB, Speaker and FAN

E-7: IR BD, E-7: Speaker, E-8: FAN, M-10: IR RECEIVER

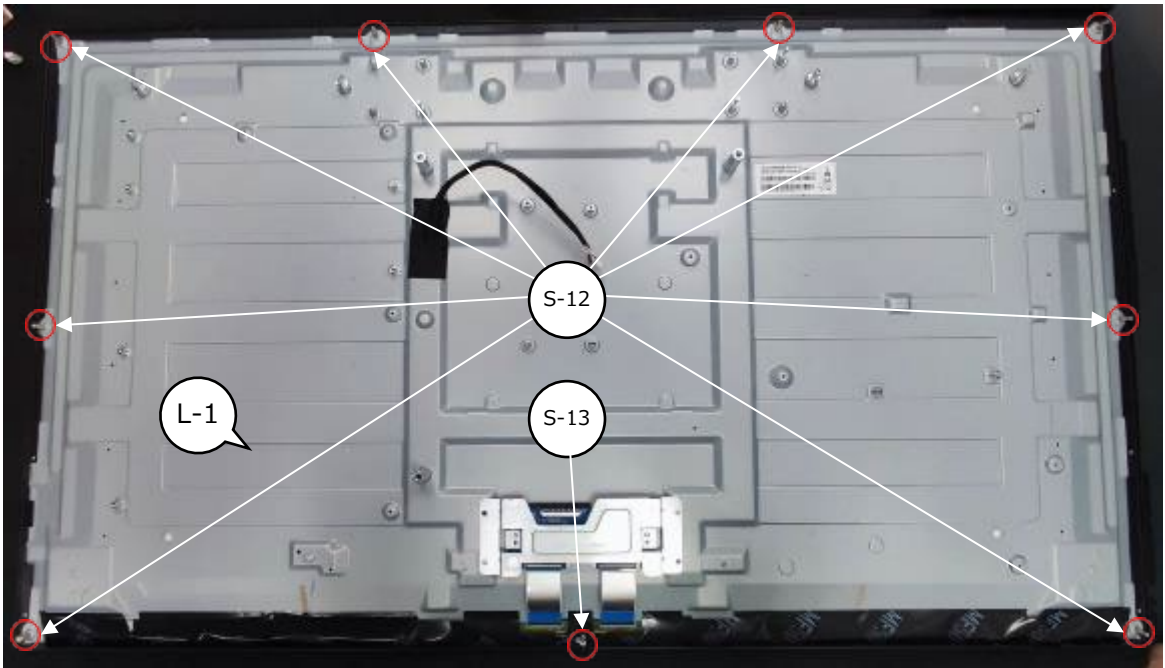
Fastening torque S-3: $6 \pm 1 \text{kgf} \cdot \text{cm}$; S-2, S-4: $4 \pm 1 \text{kgf} \cdot \text{cm}$



12) Remove the LCD panel

L-1: LCD Panel

Fastening torque S-12, S-13: $4.5 \pm 0.5 \text{kgf} \cdot \text{cm}$

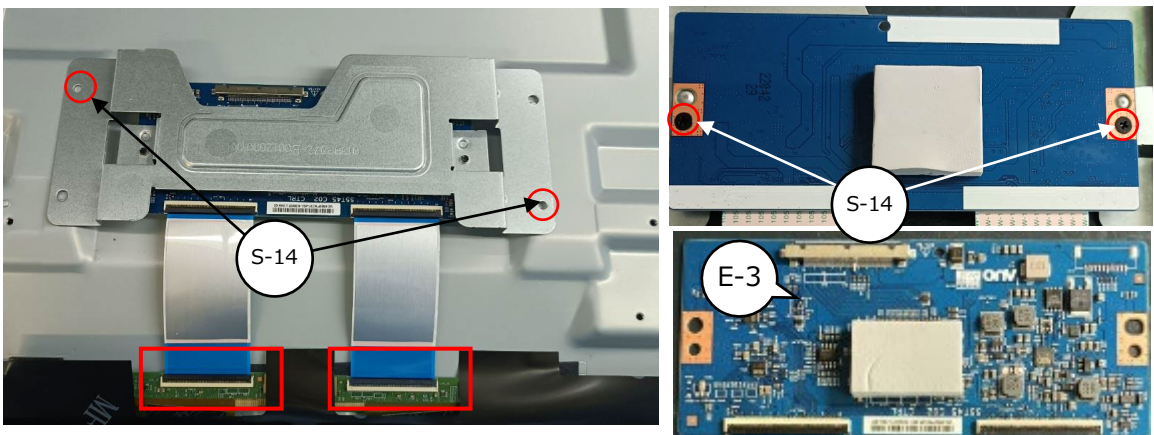


13) Remove the T-CON PWB

E-3: T-CON PWB

Fastening torque S-14: $3 \pm 0.5 \text{kgf} \cdot \text{cm}$

S-14: 0M1B0000A48000*

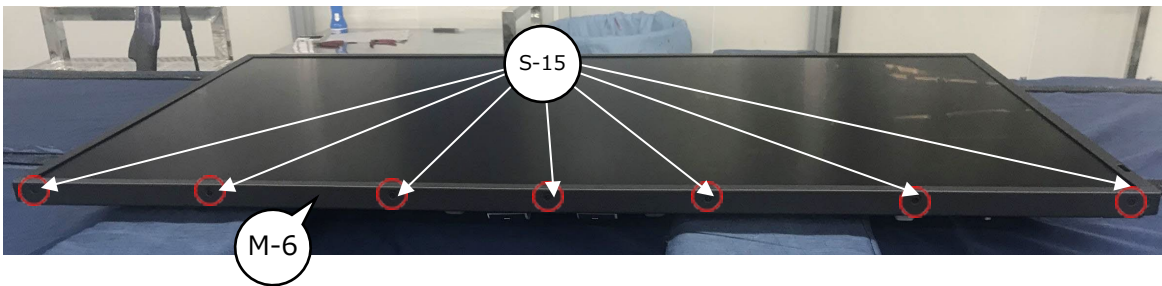
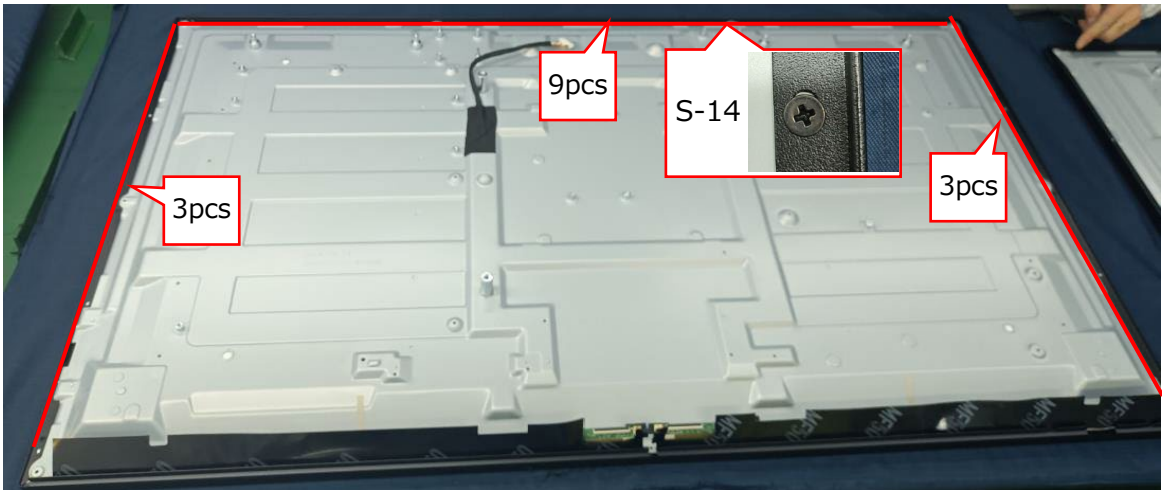


14) Remove from LCD panel to Bezel




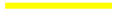







M-5: BEZEL TOP M502, M-6: BEZEL BOTTOM M502

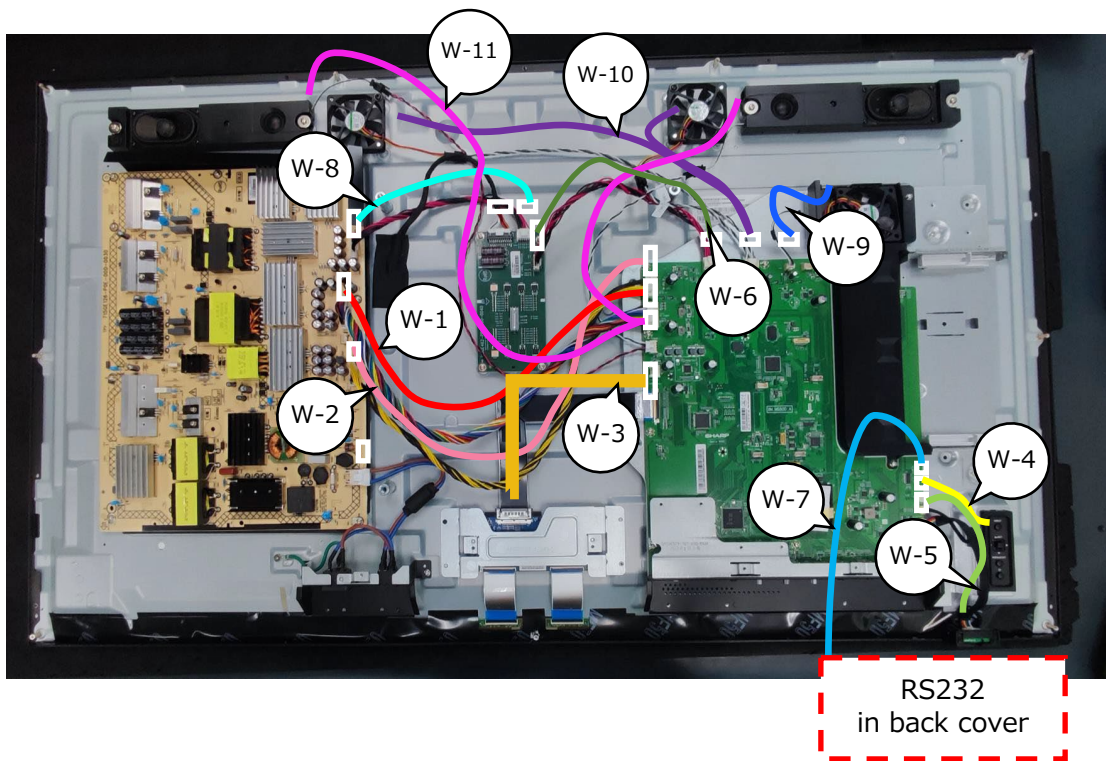
Fastening torque S-14: $3 \pm 0.5 \text{kgf} \cdot \text{cm}$, S-14: 0M1B0000A48000*

Fastening torque S-15: $3 \pm 0.5 \text{kgf} \cdot \text{cm}$, S-15: X01B000105800100*



15) Wiring diagram

W-1		MAIN PWB ↔ POWER PWB
W-2		MAIN PWB ↔ POWER PWB
W-3		MAIN PWB ↔ T-CON PWB
W-4		MAIN PWB ↔ KEY PWB
W-5		MAIN PWB ↔ IR PWB
W-6		MAIN PWB ↔ LD PWB
W-7		MAIN PWB ↔ RS232
W-8		POWER PWB ↔ CONVERTER PWB
W-9		MAIN PWB ↔ FAN1
W-10		MAIN PWB ↔ FAN2
W-11		MAIN PWB ↔ SPEAKER



6. Parts List

The spare parts listed in the column "Spare Parts" below are kept available in accordance to legal requirements of EU Regulation 2019/2021 for professional repairer.

Spare Part	Part Name/ Element of Part
a. Internal power board	Power PWB
b. Connectors to connect external equipment	Main PWB
c. Batteries and Accumulators	not applicable
d. DVD/Blue-Ray module	not applicable
e. HD/SSD module	not applicable