



LCD MONITOR

MODEL **PN-HW751**

Dismantle Instruction

Table of contents

1. Scope.....	3
2. Tools for dismantling.....	3
3. Dismantle Procedure	3
4. Back covers	4
5. Printed circuit boards	5
6. Battery.....	5
7. LCD Module	6
8. Capacitors.....	7
9. Parts List	7

1. Scope

This document describes dismantling instruction according to Annex VII of Directive 2012/19/EU.

2. Tools for dismantling

Below tools are required to dismantle this product.

- Screw Driver
- Nipper

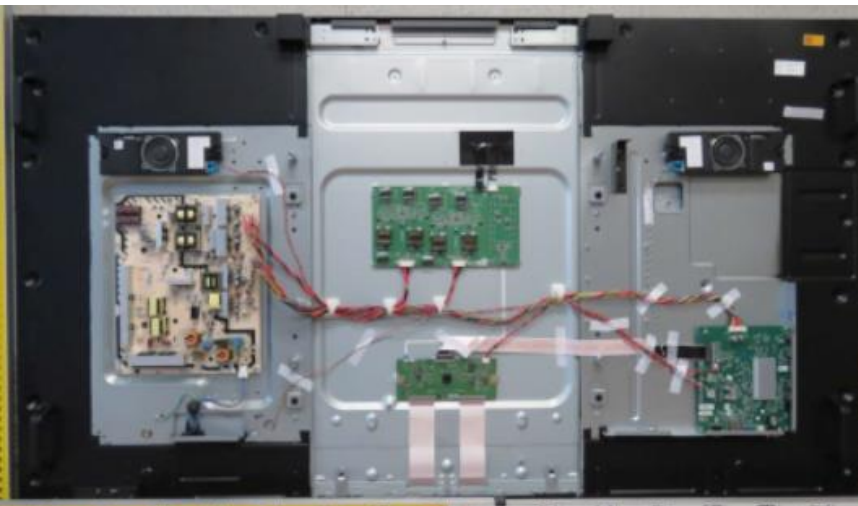
3. Dismantle Procedure

This product can be dismantled by below steps.

1. Remove Back covers (section 4)
2. Remove Printed circuit boards (section 5)
3. Remove Battery (section 6)
4. Dismantle LCD (section 7)
5. Remove Electrolyte Capacitors (section 8)

4. Back covers

Back cover can be removed by screw driver.

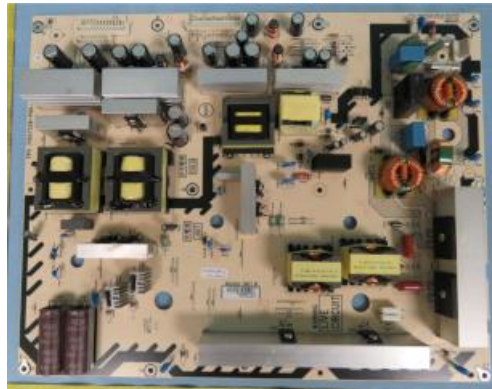


5. Printed circuit boards

All PWBs can be removed by screw driver.



Main I/F PWB (1pcs)



Power PWB (1pcs)



LED driver PWB (1pcs)



T-CON PWB (1pcs)

6. Battery

This model uses only AAA battery for remote control.

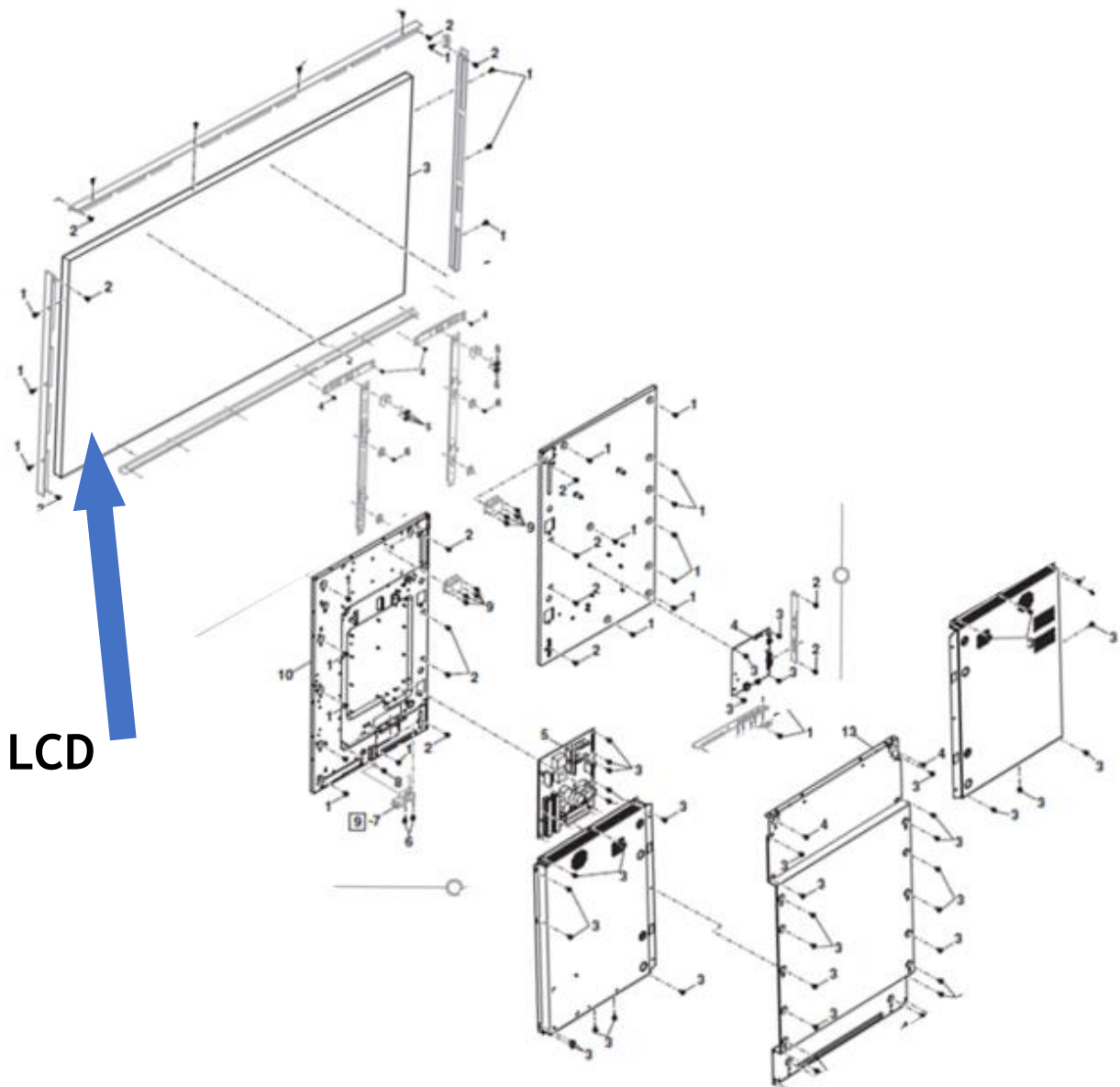
Battery can easily be removed.



7. LCD Module

- LCD Dismantle procedure

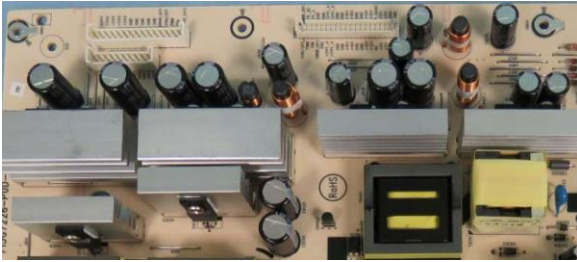
1. Remove Rear cover
2. Remove PWBs and Tray
3. Remove the Cables



8. Capacitors

Electrolyte Capacitors which diameter/height is larger than 25mm is installed on Power PWB and LED driver PWB.

These capacitors can be removed by using nipper to cut the leads.



On Power PWB



On LED driver PWB

9. Parts List

Parts described in Annex VII of directive 2012/19/EU are as below.

Parts	Note
LCD	75inch LCD module
Printed Circuit Boards	Main I/F PWB Power PWB LED driver PWB T-CON PWB
Battery	AAA battery
Electrolyte capacitors (height >25mm, diameter >25mm)	On Power PWB On LED driver PWB
External electric cables	2 kinds of Power Cord - for EU - for UK