



LCD MONITOR

DD-EA272Q
DD-EA272QW
DD-EA272Q
(P ver.)
DD-EA272U
MODEL DD-EA272UW

Dismantle Instruction

Table of contents

1. Scope	3
2. Tools for dismantling.....	3
3. Dismantle Procedure.....	3
4. Back covers.....	4
(1) DD-EA272Q / DD-EA272QW	4
(2) DD-EA272U / DD-EA272UW	5
5. PWB and other electronic components	6
(1) MAIN PWB	6
(2) POWER PWB.....	6
(3) KEY PWB.....	7
(4) IR PWB.....	7
(5) Speaker	7
6. LCD Module bezels	7
7. Parts List.....	8

1. Scope

This document describes dismantling instruction according to Annex VII of Directive 2012/19/EU.

2. Tools for dismantling

- Screw Driver
- Nipper

3. Dismantle Procedure

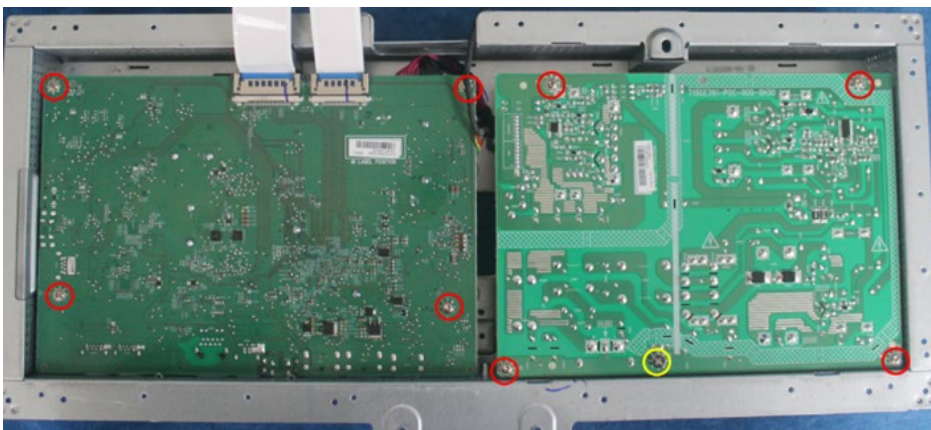
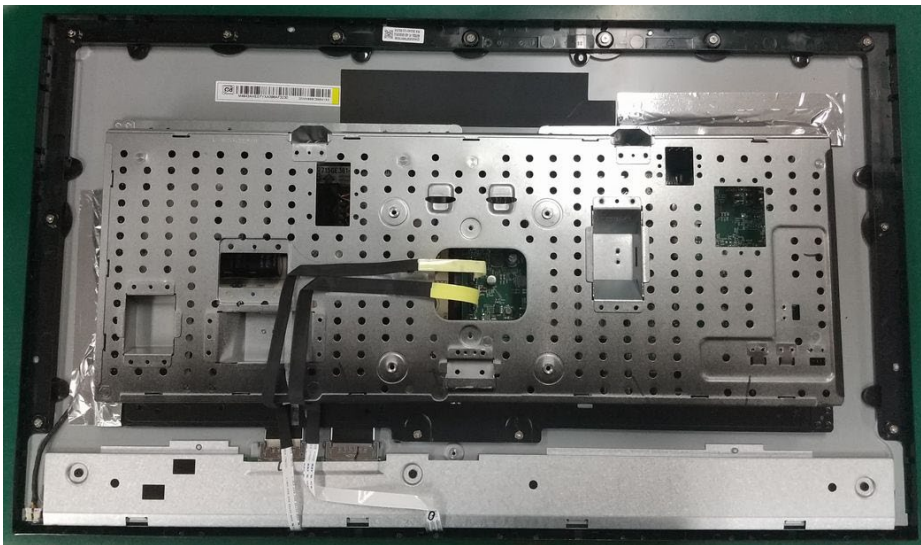
This product can be dismantled by below steps.

1. Remove Back covers (section 4)
2. Remove Printed circuit boards (section 5)
3. Dismantle LCD (section 6)

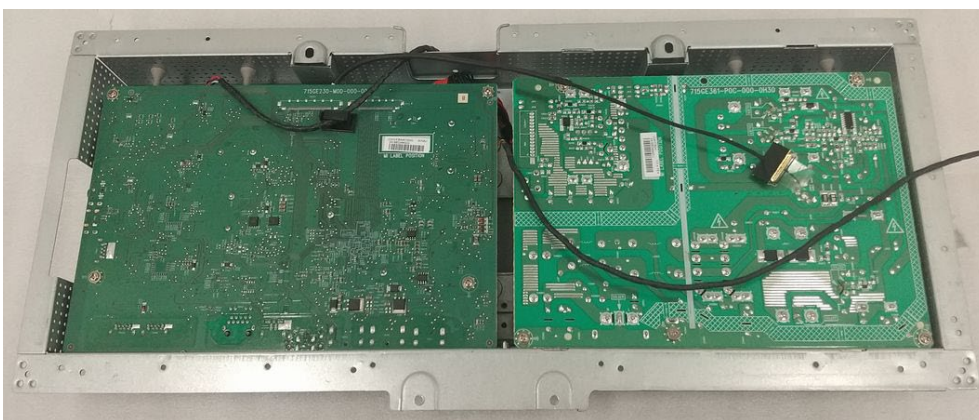
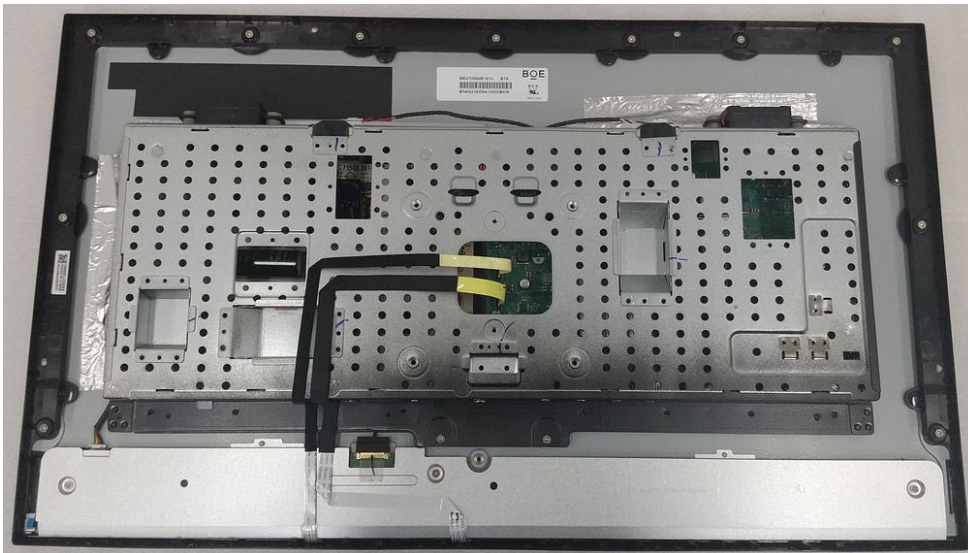
4. Back covers

back cover can be removed by screw driver.

(1) DD-EA272Q / DD-EA272QW / DD-EA272Q P ver.



(2) DD-EA272U / DD-EA272UW



5. PWB and other electronic components

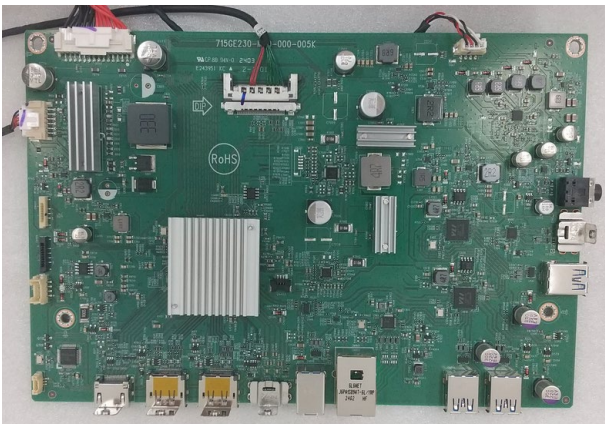
All electronic components can be removed by screw driver.

(1) MAIN PWB

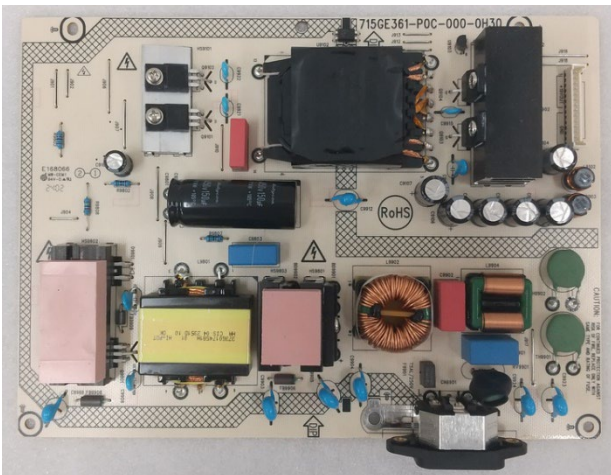
DD-EA272Q / DD-EA272QW



DD-EA272U / DD-EA272UW / DD-EA272Q P ver.



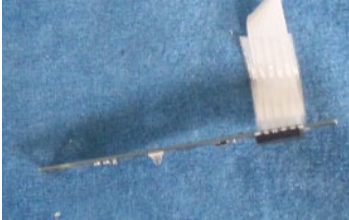
(2) POWER PWB



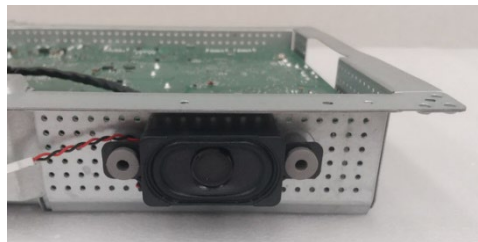
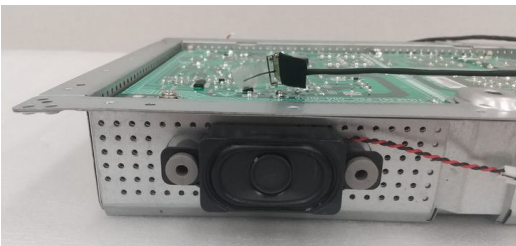
(3) KEY PWB



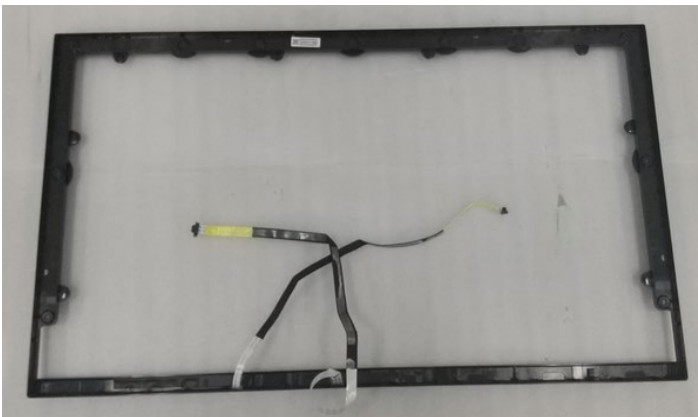
(4) IR PWB



(5) Speaker (only DD-EA272U / DD-EA272UW)



6. LCD Module bezels



7. Parts List

The spare parts listed in the column "Spare Parts" below are kept available in accordance to legal requirements of EU Regulation 2019/2021 for professional repairer.

Spare Part	Part Name/ Element of Part
a. Internal power board	Power PWB
b. Connectors to connect external equipment	Main PWB
c. Batteries and Accumulators	not applicable
d. DVD/Blue-Ray module	not applicable
e. HD/SSD module	not applicable