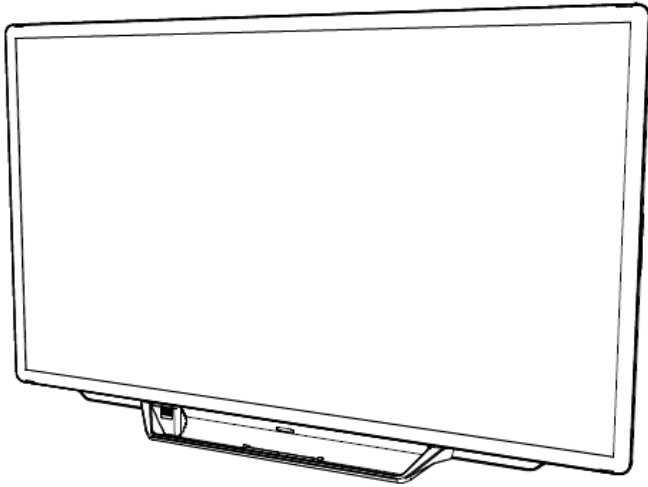


SHARP

PN-70TH5 Dismantle Instruction



LCD MONITOR

MODEL PN-70TH5

Dismantle Instruction

Table of contents

1. Scope	3
2. Tools for dismantling	3
3. Dismantle Procedure	3
4. Back covers	4
5. Printed circuit boards.....	5
6. Battery	6
7. LCD Module	7
8. Capacitors	8
9. Parts List	9

1. Scope

This document describes dismantling instruction according to Annex VII of Directive 2012/19/EU.

2. Tools for dismantling

Below tools are required to dismantle this product.

- Screw Driver
- Nipper

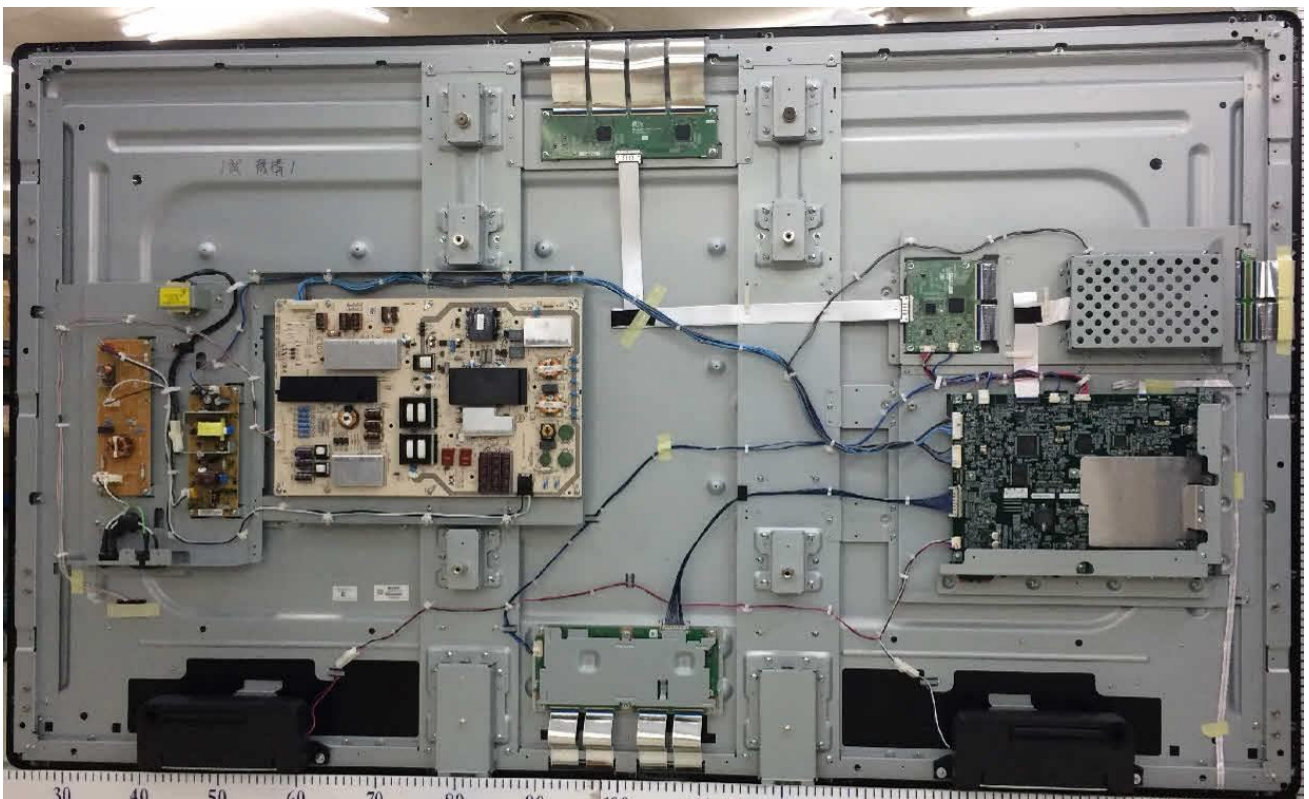
3. Dismantle Procedure

This product can be dismantled by below steps.

1. Remove Back covers (section 4)
2. Remove the shielding.
3. Remove Printed circuit boards (section 5)
4. Remove Battery (section 6)
5. Dismantle LCD (section 7)
6. Remove Electrolyte Capacitors (section 8)

4. Back covers

2 back covers (right/left) can be removed by screw driver.

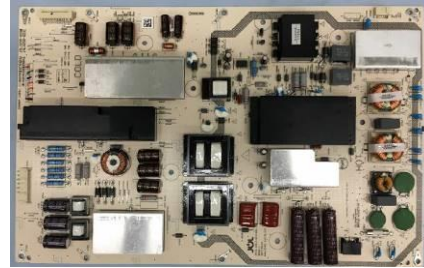


5. Printed circuit boards

All PWBs can be removed by screw driver.



Main I/F PWB (1pcs)



Power PWB (1pcs)



Touch PWB 1(1pcs)



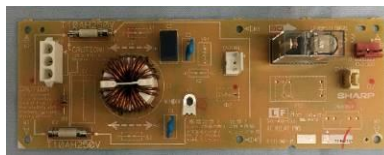
Touch PWB 2 (1pcs)



Conversion PWB (1pcs)



FFC relay PWB (1pcs)



AC Relay PWB (1pcs)



5V Power PWB (1pcs)



T-CON PWB (1pcs)



Key PWB (1pcs)

6. Battery

This model uses CR2032 Lithium Coin battery on Main I/F PWB and AAA battery for remote control. Battery can easily be removed from the battery holder.

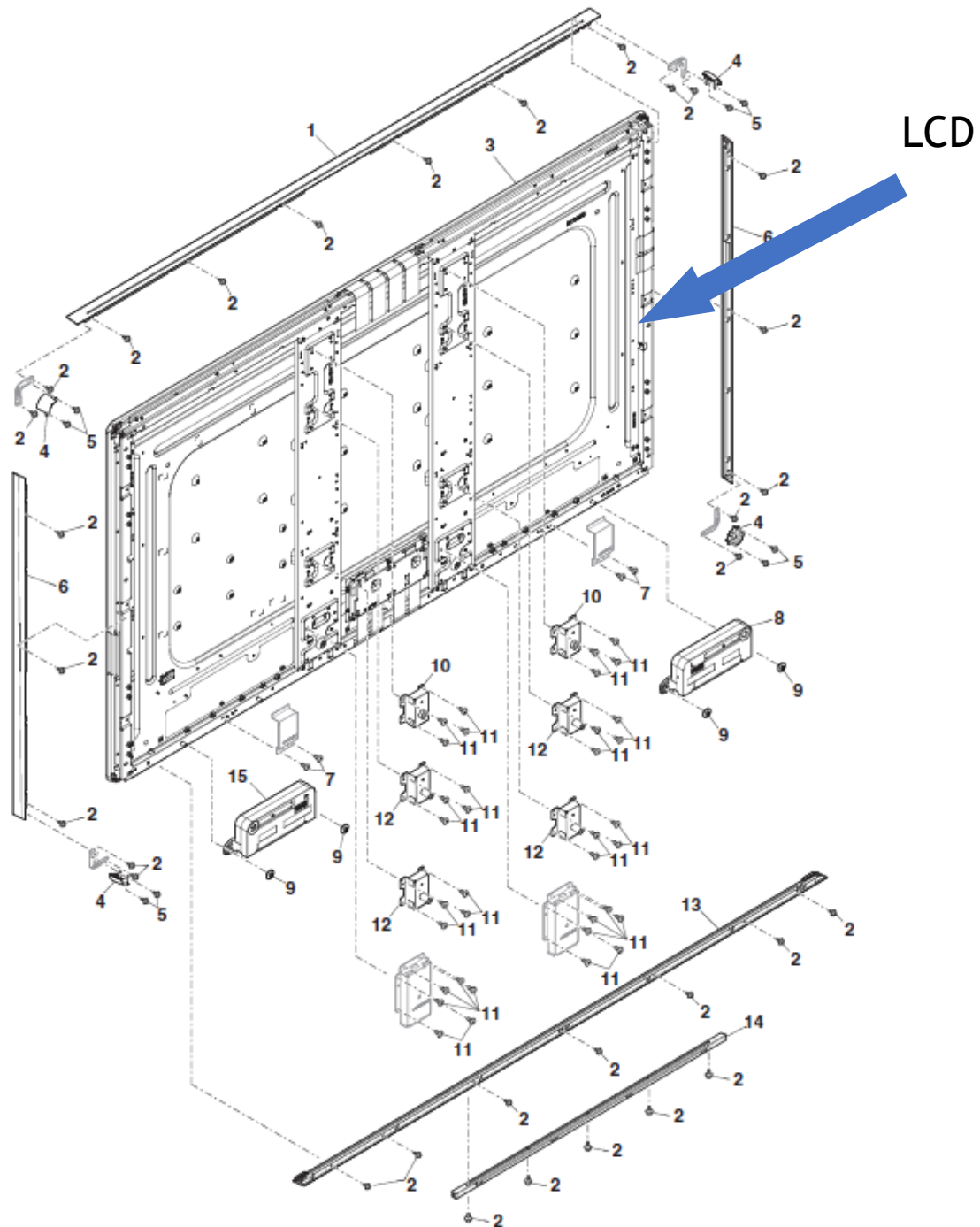


7. LCD Module

- LCD Dismantle procedure

After you have removed the PWB's and dismantled the LCD Module please take out the cables from the LCD module.

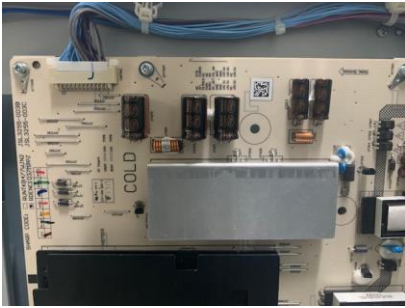
Due to direct bonding technology the front glass cannot be removed from the LCD.



8. Capacitors

Electrolyte Capacitors which diameter/height is larger than 25mm is installed on Power PWB, LED driver PWB and 5V Power PWB.

These capacitors can be removed by using nipper to cut the leads.



On Power PWB



On 5V Power PWB

9. Parts List

Parts described in Annex VII of directive 2012/19/EU are as below.

Parts	Note
LCD	70inch LCD module
Printed Circuit Boards	Main I/F PWB Power PWB Touch PWB 1 Touch PWB 2 Conversion PWB FFC Relay PWB AC Relay PWB 5V Power PWB Key PWB T-CON PWB
Battery	Lithium Coin Battery CR2032 Battery (AAA) of remote control
Electrolyte capacitors (height >25mm, diameter >25mm)	On Power PWB On 5V Power PWB
External electric cables	2 kinds of Power Cord - CEE 7 (for EU) - Type-BF (for UK)