

# SHARP

PN-70HC1E Dismantle Instruction



## LCD MONITOR

MODEL PN-70HC1E

## Dismantle Instruction

---

## Table of contents

---

1. Scope .....	3
2. Tools for dismantling.....	3
3. Dismantle Procedure.....	3
4. Back covers .....	4
5. Printed circuit boards .....	5
6. Batteries .....	6
7. LCD Module/cover glass/bracket .....	7
8. Capacitors.....	8
9. Parts List .....	8

## **1. Scope**

This document describes dismantling instruction according to Annex VII of Directive 2012/19/EU.

## **2. Tools for dismantling**

Below tools are required to dismantle this product.

- Screw Driver
- Nipper

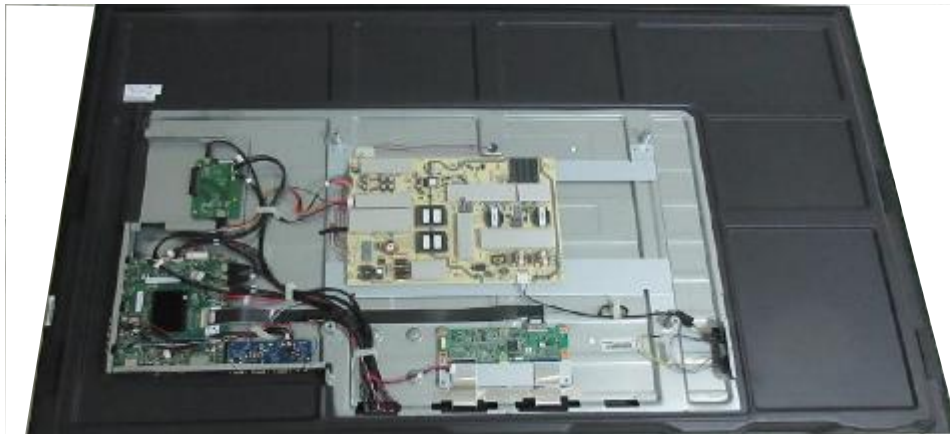
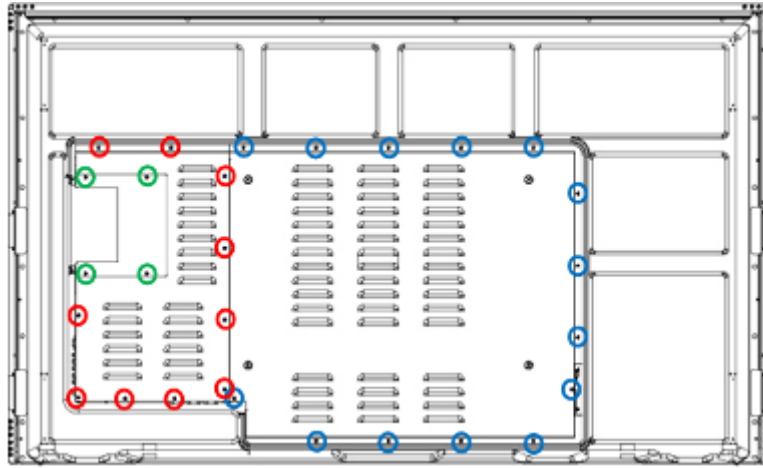
## **3. Dismantle Procedure**

This product can be dismantled by below steps.

1. Remove Back covers (section 4)
2. Remove the shielding
3. Remove Printed circuit boards (section 5)
4. Remove battery (section 6)
5. Dismantle LCD (section 7)
6. Remove Electrolyte Capacitors (section 8)

## 4. Back covers

Back covers can be removed by screw driver.



## 5. Printed circuit boards

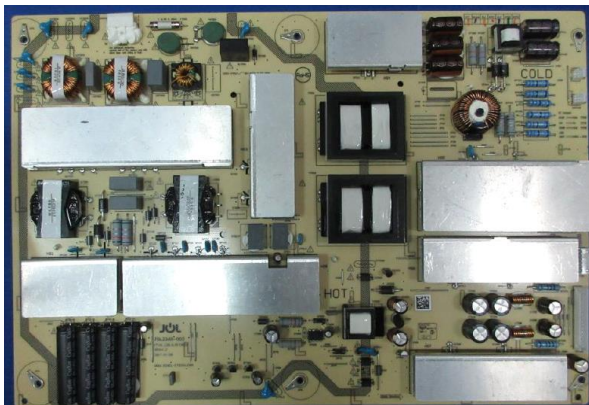
All PWBs can be removed by screw driver.



Main PWB (1pcs)



Connector PWB(1pcs)



Power PWB (1pcs)



IO PWB (1pcs)



T-con PWB (1pcs)



OPS PWB(1pcs)

## 6. Batteries

This model uses CR2032 Lithium Coin battery on MAIN PWB.  
Battery CR2032 can easily be removed from the battery holder.



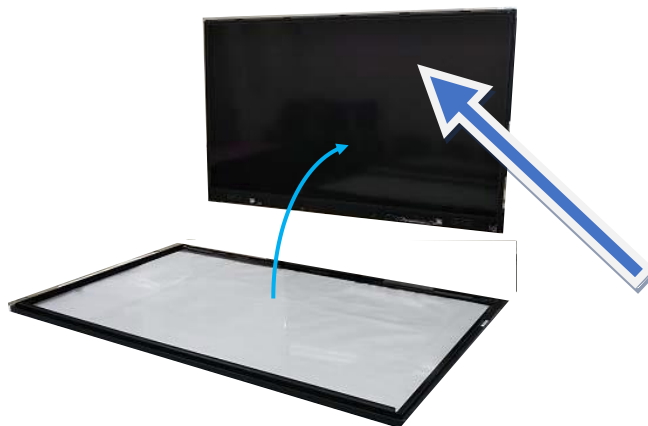
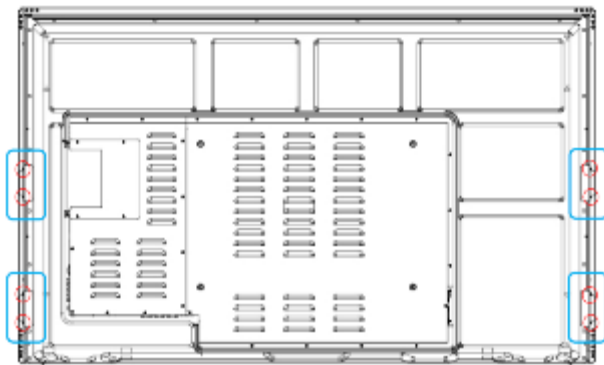
This model uses AAA battery for remote control.  
Battery can easily be removed



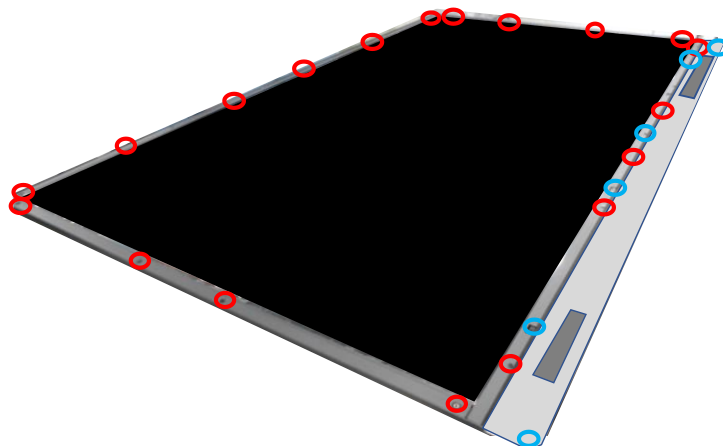
## 7. LCD Module bezels/bracket

### - LCD Dismantle procedure

1. Remove screws
2. Remove Cover glass and Bezels
3. Remove screws
4. Remove Middle Frame
5. After you have removed the PWB's, the cover glass and bezels please take out the cables from the LCD module.



LCD



## 8. Capacitors

Electrolyte Capacitors which diameter/height is larger than 25mm is installed on the Power PWB.

These capacitors can be removed by using nipper to cut the leads.



## 9. Parts List

Parts described in Annex VII of directive 2012/19/EU are as below.

Parts	Note
LCD	70inch LCD module
Batteries	Battery CR2032 of the main board Battery (AAA) of remote control
Printed Circuit Boards	Main PWB Connector PWB Power PWB IO PWB T-CON PWB OPS PWB
Electrolyte capacitors (height >25mm, diameter >25mm)	On the Power PWB
External electric cables	2 kinds of Power Cord - CEE 7 (for EU) - Type-BF (for UK)