



LCD MONITOR

MODEL PN- R706

Dismantle Instruction

Table of contents

| | |
|---------------------------------|---|
| 1. Scope..... | 3 |
| 2. Tools for dismantling..... | 3 |
| 3. Dismantle Procedure | 3 |
| 4. Back covers | 4 |
| 5. Printed circuit boards | 5 |
| 6. Battery..... | 5 |
| 7. LCD Module | 6 |
| 8. Capacitors..... | 7 |
| 9. Parts List | 7 |

1. Scope

This document describes dismantling instruction according to Annex VII of Directive 2012/19/EU.

2. Tools for dismantling

Below tools are required to dismantle this product.

- Screw Driver
- Nipper

3. Dismantle Procedure

This product can be dismantled by below steps.

1. Remove Back covers (section 4)
2. Remove the shielding
3. Remove Printed circuit boards (section 5)
4. Remove Battery (section 6)
5. Dismantle LCD (section 7)
6. Remove Electrolyte Capacitors (section 8)

4. Back covers

Back cover can be removed by screw driver.



5. Printed circuit boards

All PWBs can be removed by screw driver.



Main I/F PWB (1pcs)



Power PWB (1pcs)



LED driver PWB (1pcs)



T-CON PWB (1pcs)



OPS PWB (1pcs)

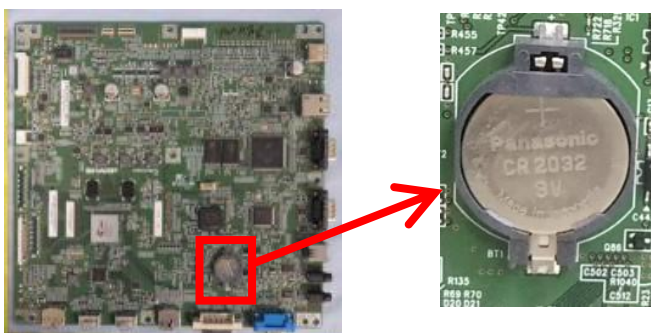
6. Battery

This model uses AAA battery for remote control and CR2032 Lithium Coin battery on Main I/F PWB.

-The remote control battery can be easily removed.



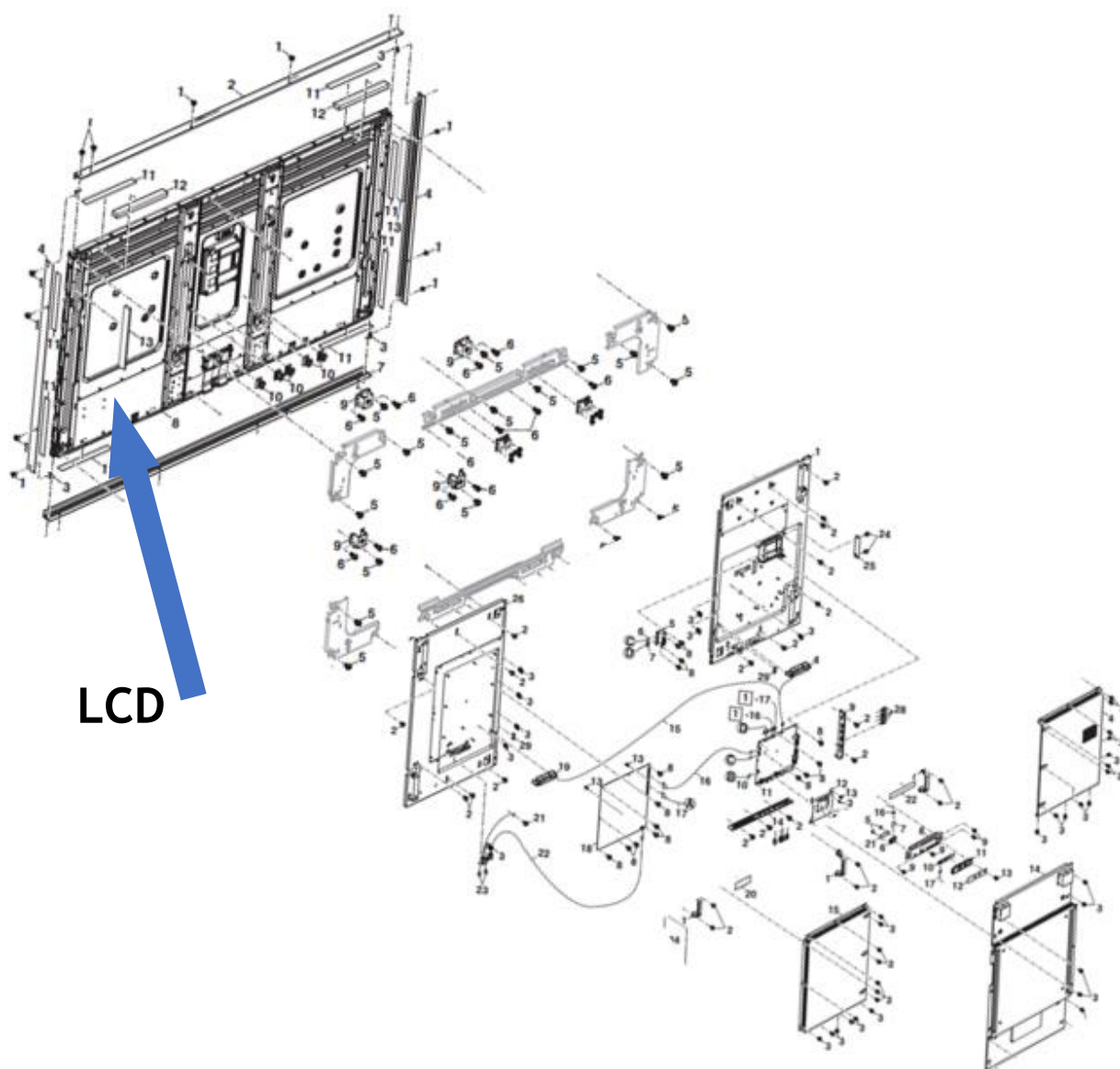
-The battery CR2032 on the main I/F PWB can be easily removed from the battery holder.



7. LCD Module

- LCD Dismantle procedure

1. Remove Rear cover
2. Remove PWBs and Tray
3. Remove the Cables



8. Capacitors

Electrolyte Capacitors which diameter/height is larger than 25mm is installed on Power PWB.
These capacitors can be removed by using nipper to cut the leads.



On Power PWB

9. Parts List

Parts described in Annex VII of directive 2012/19/EU are as below.

| Parts | Note |
|--|---|
| LCD | 70inch LCD module |
| Printed Circuit Boards | Main I/F PWB Power PWB LED driver PWB T-CON PWB OPS PWB |
| Battery | AAA battery Lithium Coin Battery CR2032 |
| Electrolyte capacitors (height >25mm, diameter >25mm) | On Power PWB |
| External electric cables | 2 kinds of Power Cord - for EU - for UK |