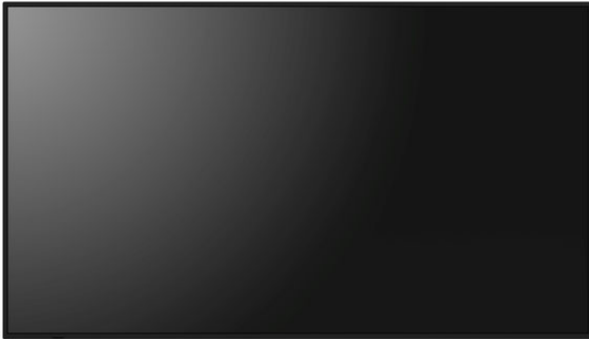


SHARP

PN-M322 Dismantle Instruction

LCD MONITOR



MODEL PN-M322

Dismantle Instruction

Table of contents

1. Scope	3
2. Tools for dismantling	3
3. Dismantle Procedure	3
4. Batteries	4
5. Disassembly	5
6. Parts List	18

1. Scope

This document describes dismantling instruction according to Annex VII of Directive 2012/19/EU.

2. Tools for dismantling

- Screw Driver
- Nipper

3. Dismantle Procedure

This product can be dismantled by below steps.

1. Remove Back covers
2. Remove Printed circuit boards

4. Batteries

This model uses only AAA battery for remote control.
Battery can easily be removed.



5. Disassembly

CHAPTER 6. DISASSEMBLY AND ASSEMBLY

1. CAUTION FOR WORK

- Before you disassemble the set, turn off power and pull out the power plug.
- Use the proper screwdriver. If oversize or undersize screwdriver is used, screws may be damaged.
- Assembly is reversed process of disassembly.
- Adhesive recommended spare parts that are used by peeling off tapes and backing materials are reused if they have sufficient adhesion even after peeling, Replace the part with a new part that is weak in adhesion and difficult to reuse.
Replace parts with new ones that are conductive and hazardous if peeled off.
Parts that are not targeted for recommended spare parts, such as insert-type clampers, are reused.

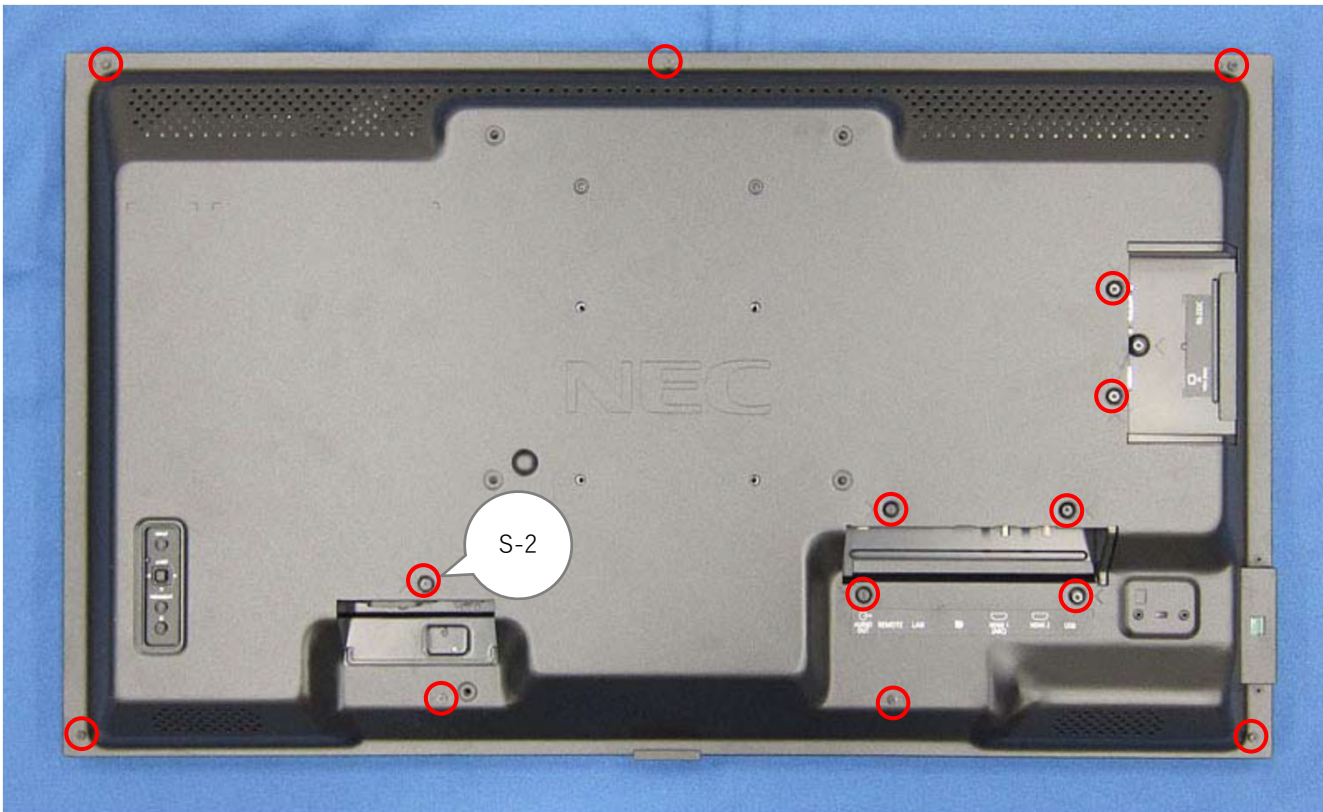
2. RECOMMENDED SPARE PARTS LIST

Please refer to the Document

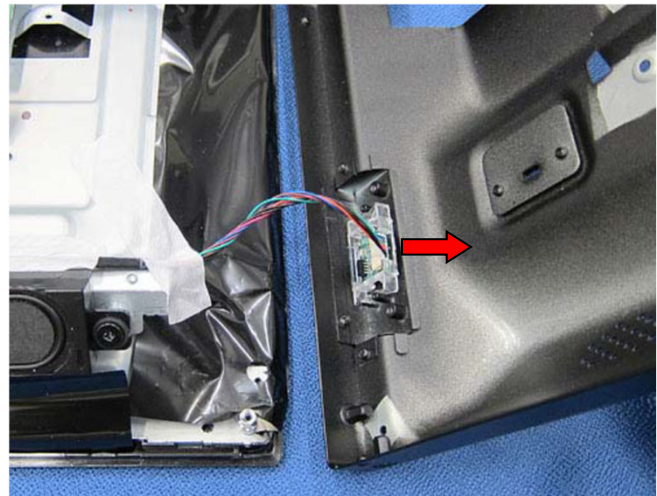
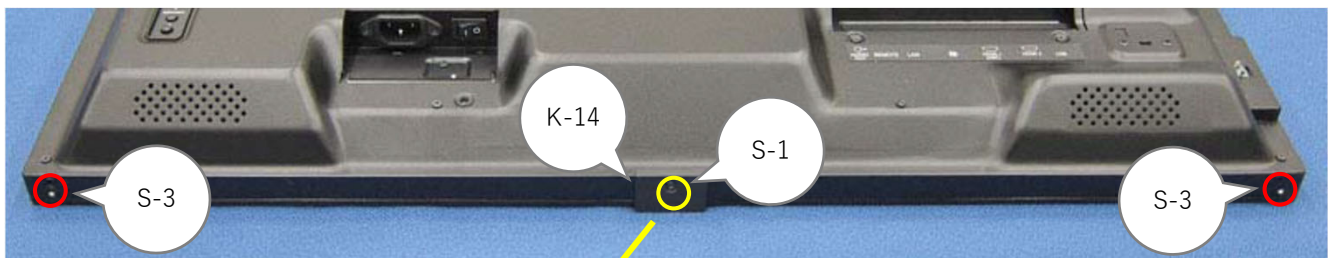
“Recommended Spare Parts List_M322”.

3. DISASSEMBLY OF M322

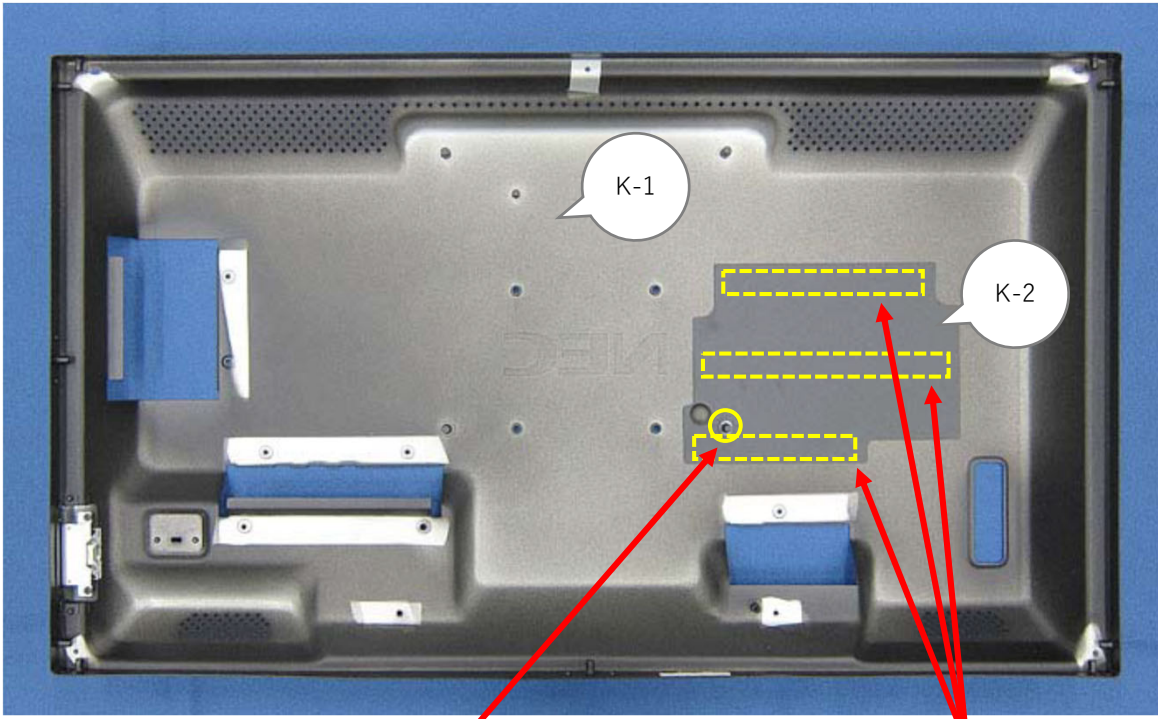
1) Remove the BACK COVER



Fastening torque S-2: $4 \pm 1 \text{kgf} \cdot \text{cm}$



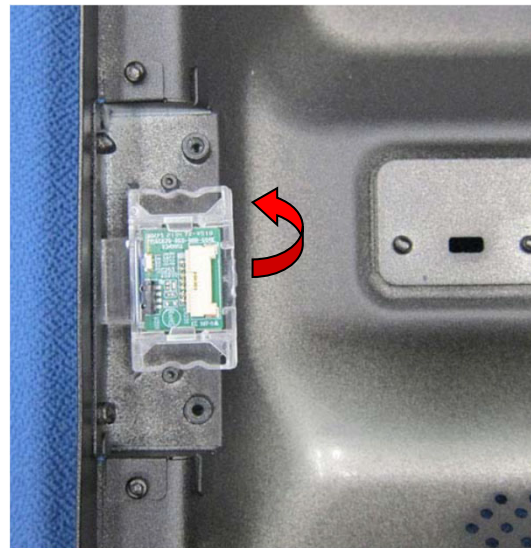
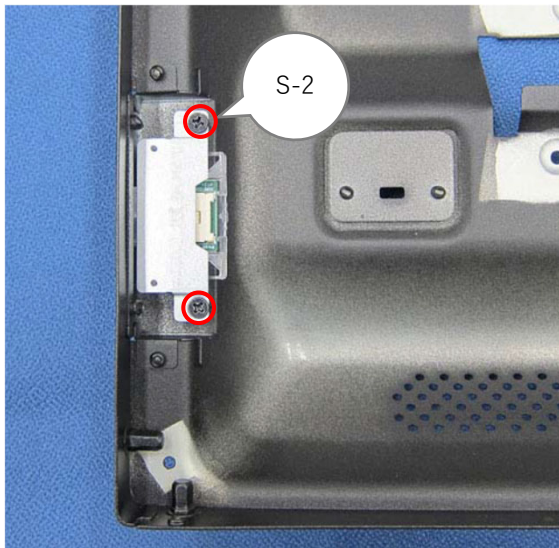
Note:
Back cover connecting IR PCB with cable.
Do not pull at this position.



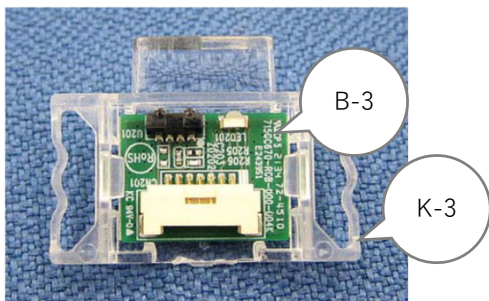
Align the round holes. Paste double-faced tape to fit the line.

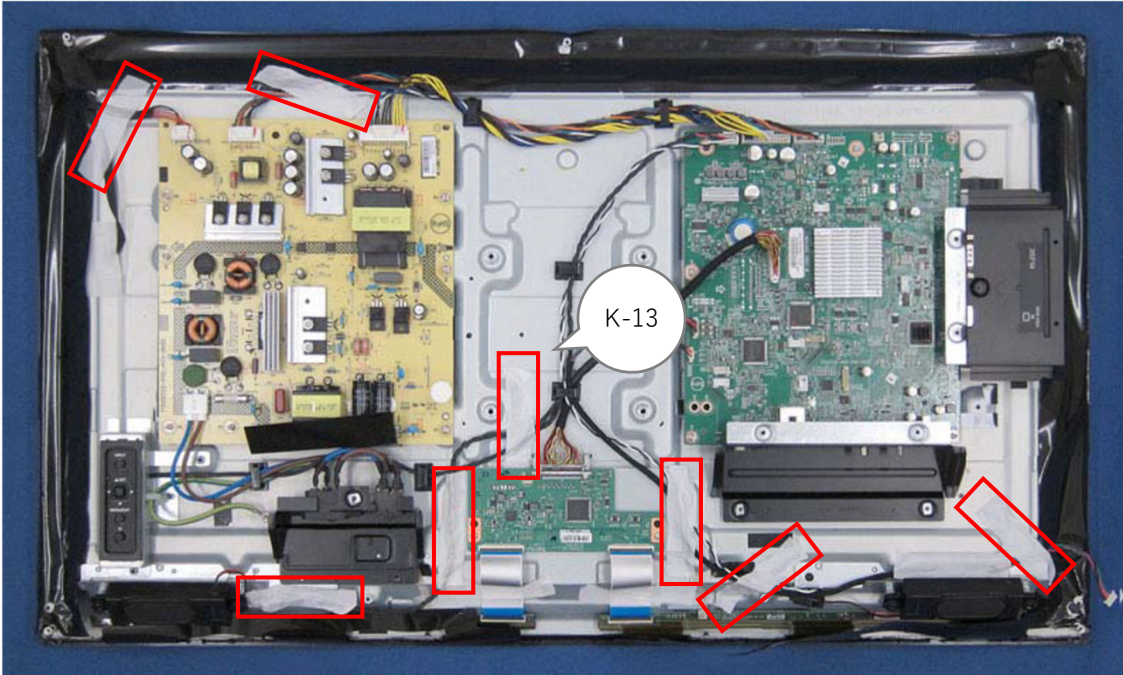
NOTE:

Paste the double-faced tape when sticking has weakened when the "INSULATING SHEET" is recycled.



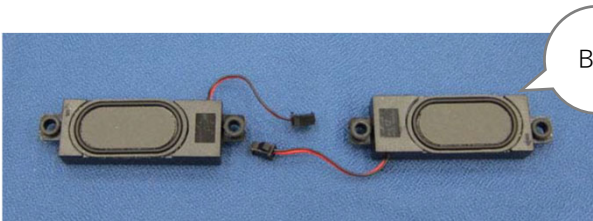
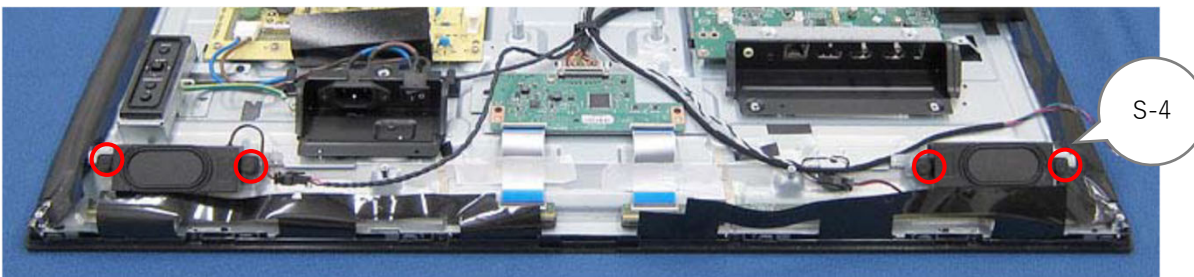
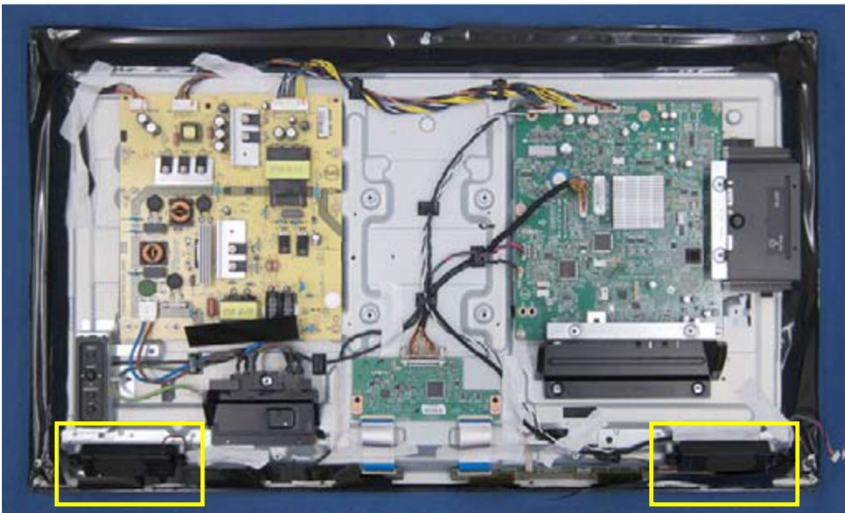
Fastening torque S-2: $4 \pm 1 \text{kgf} \cdot \text{cm}$





K-8: Fix on the position in the above photo with TAPE. (L = 80mm)

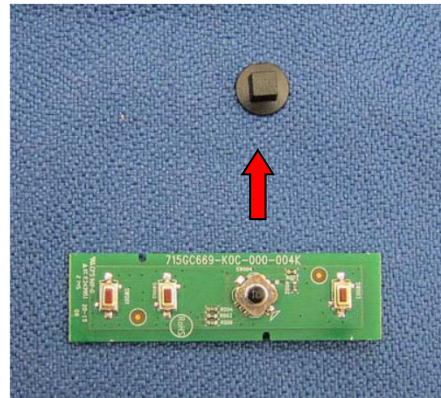
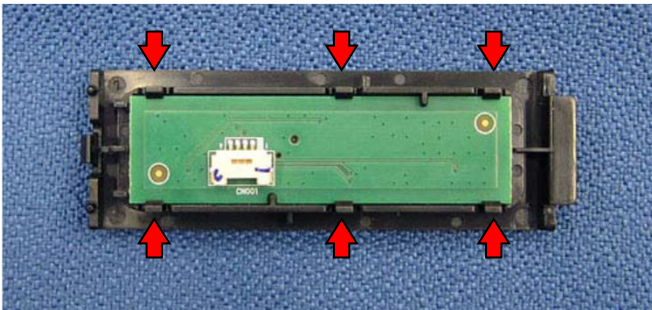
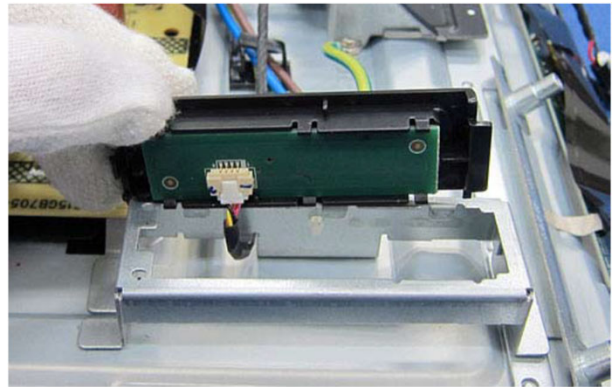
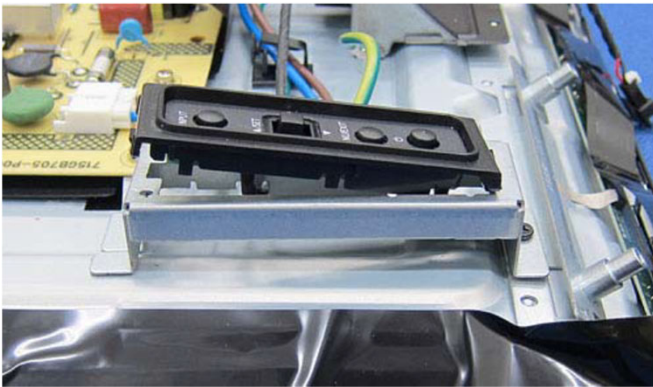
2) Remove the SPEAKER



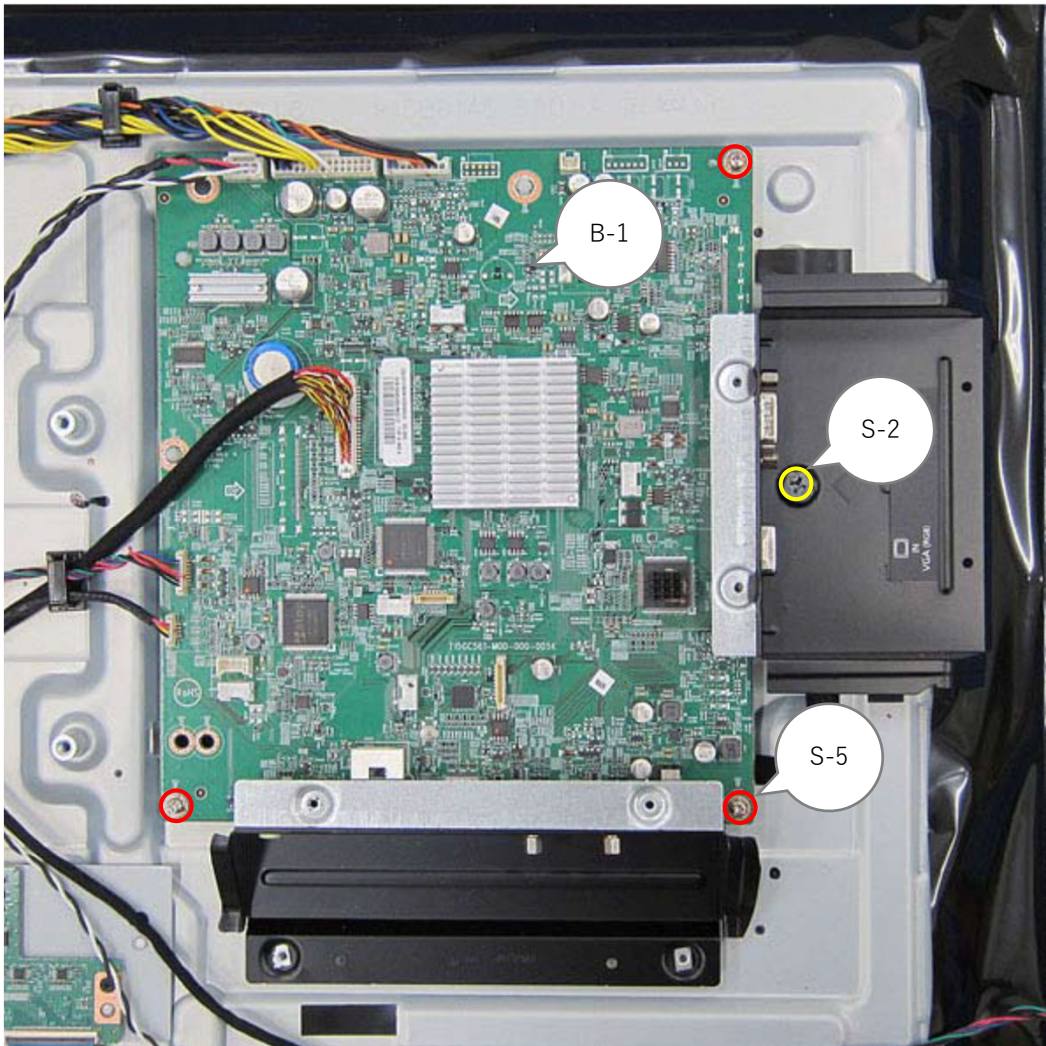
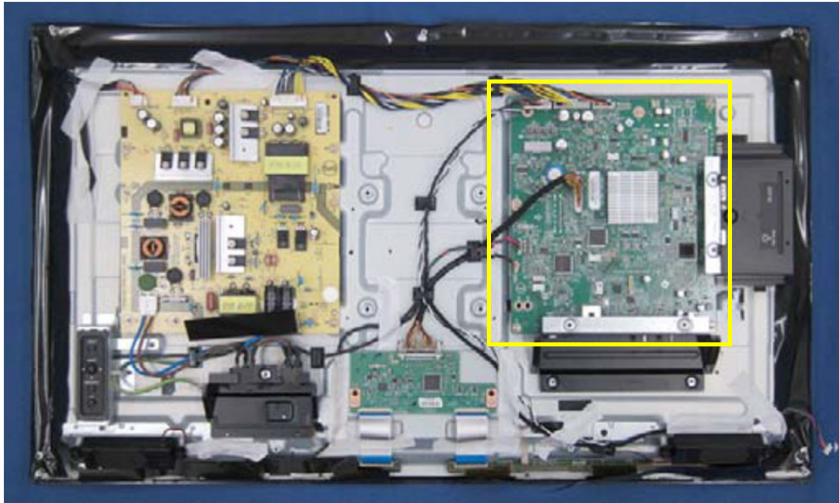
Fastening torque S-4: $4 \pm 1 \text{kgf} \cdot \text{cm}$

5) Remove the PWB

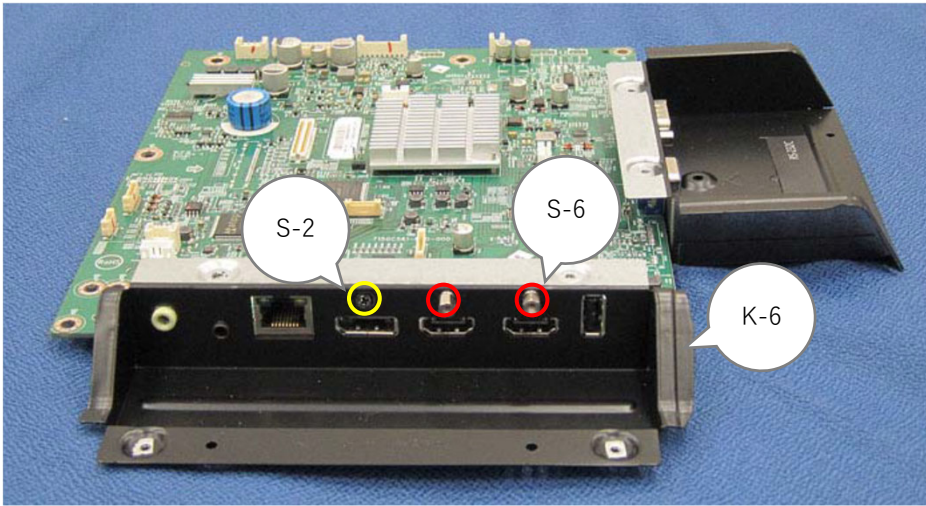
- Remove the KEY PWB



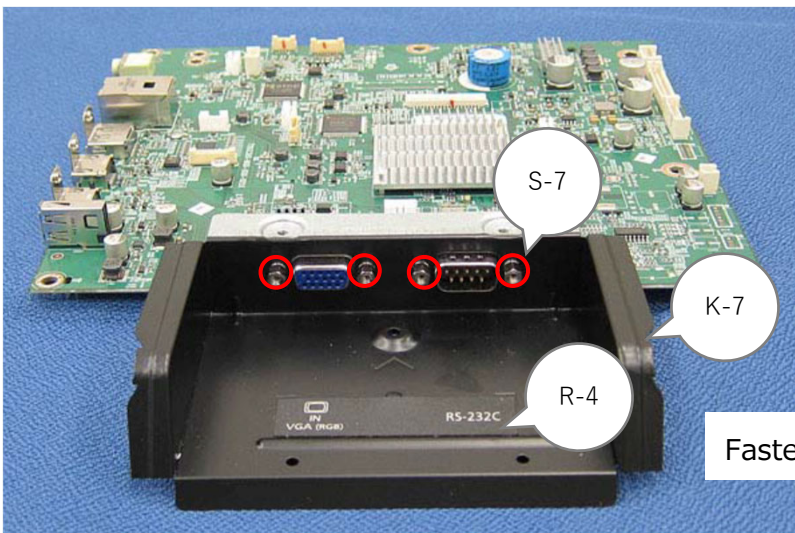
■ Remove the MAIN PWB



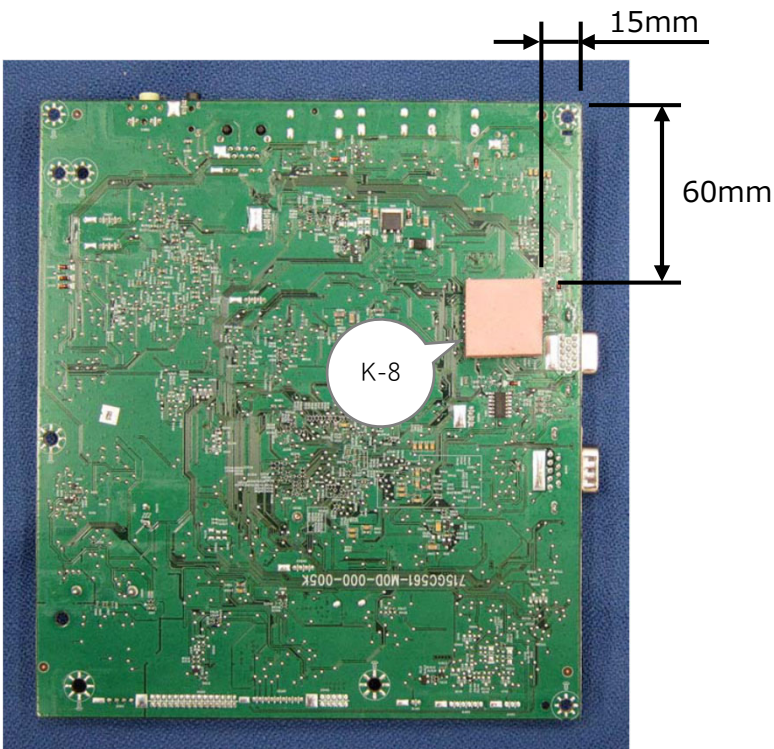
Fastening torque S-2, S-5: $4 \pm 1 \text{ kgf} \cdot \text{cm}$



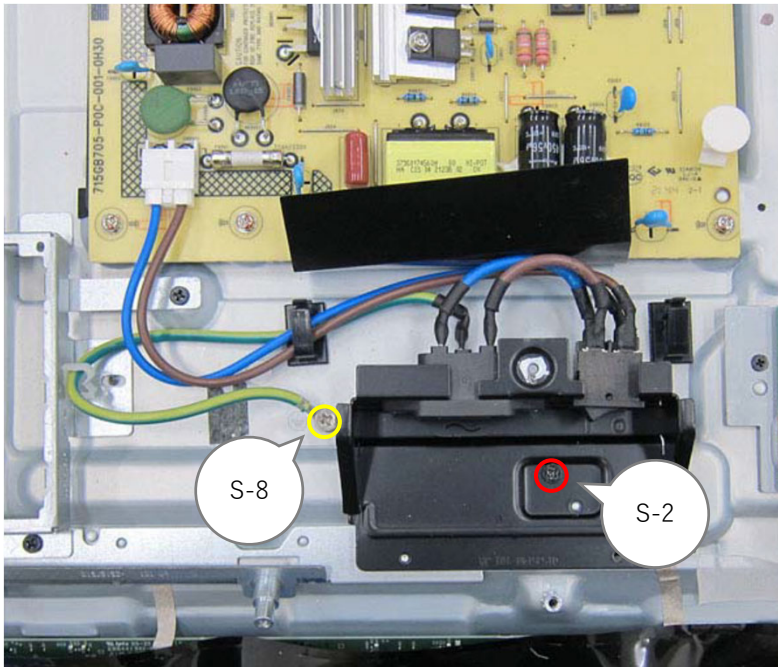
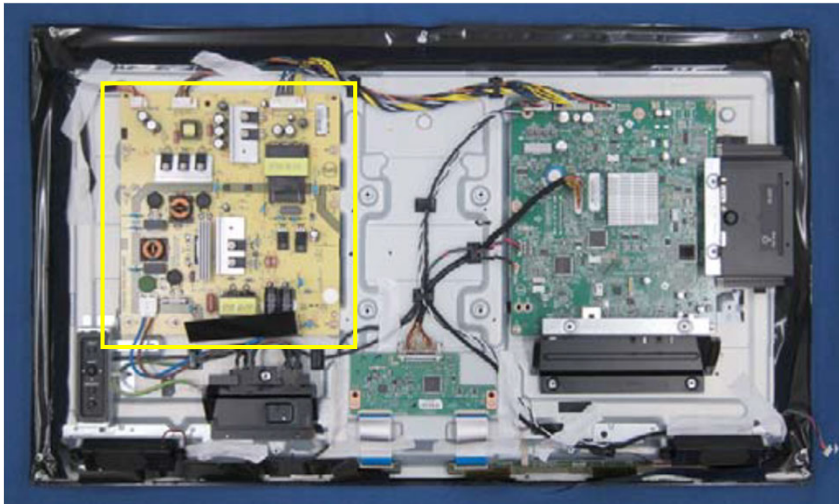
Fastening torque S-2: $4 \pm 1 \text{kgf} \cdot \text{cm}$, S-6: $4 \pm 1 \text{kgf} \cdot \text{cm}$



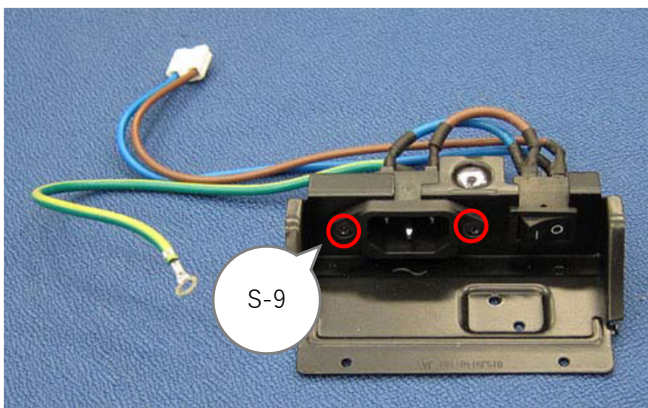
Fastening torque S-7: $4 \pm 1 \text{kgf} \cdot \text{cm}$



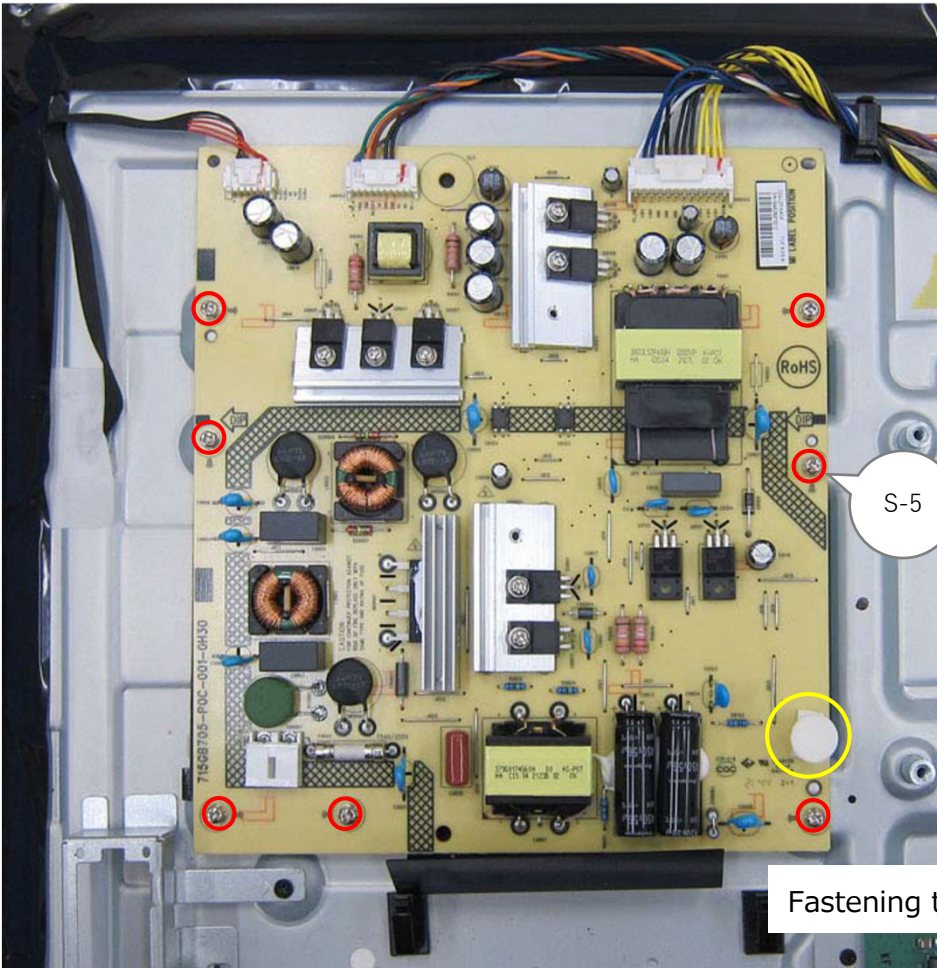
■ Remove the POWER PWB



Fastening torque S-2, S-8: $4 \pm 1 \text{kgf} \cdot \text{cm}$



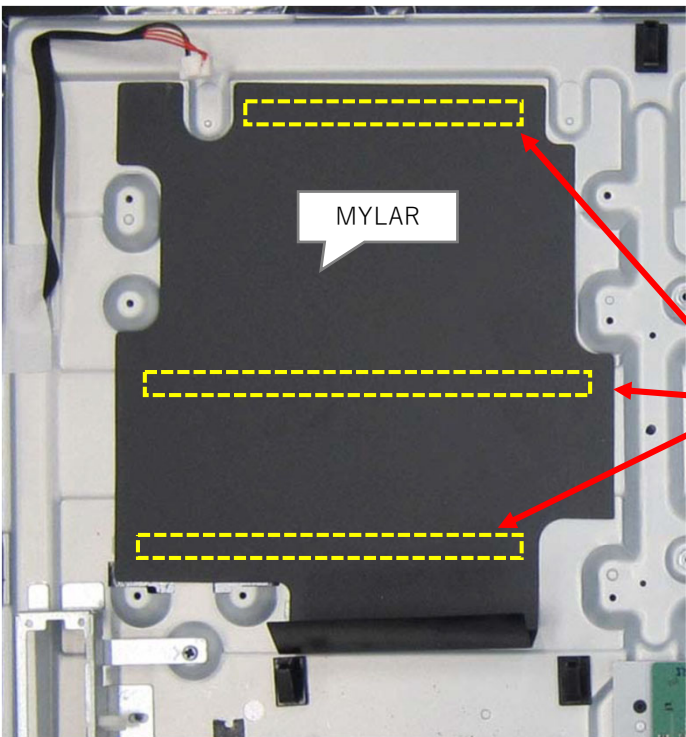
Fastening torque S-9: $4 \pm 1 \text{kgf} \cdot \text{cm}$



Fastening torque S-5: $4 \pm 1 \text{ kgf} \cdot \text{cm}$

NOTE:

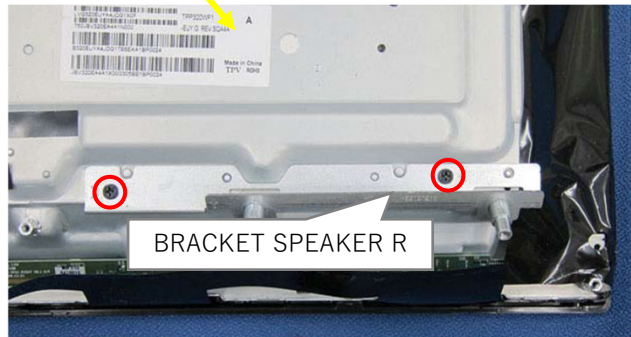
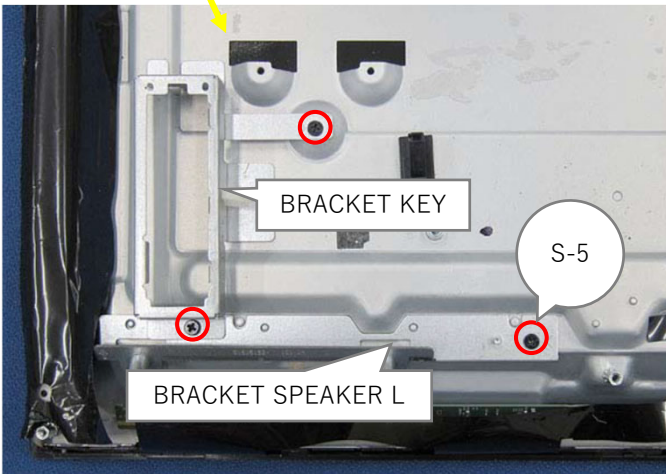
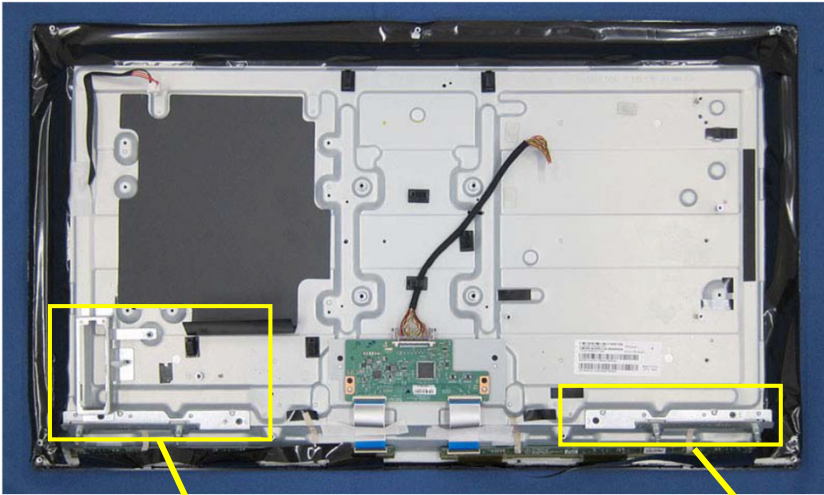
When the POWER PWB is exchanged, the PCB-SUPPORT is removed and it recycles.



Paste double-faced tape.

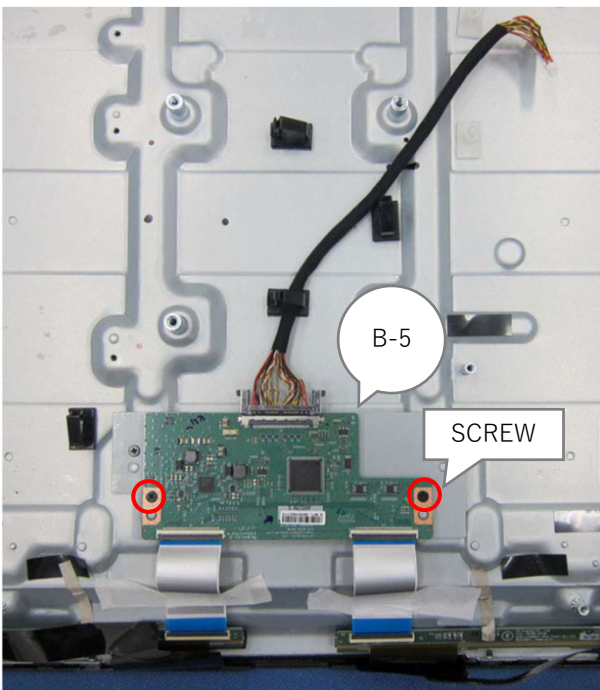
NOTE:

When the LCD PANEL is exchanged, the MYLAR is removed and it recycles.

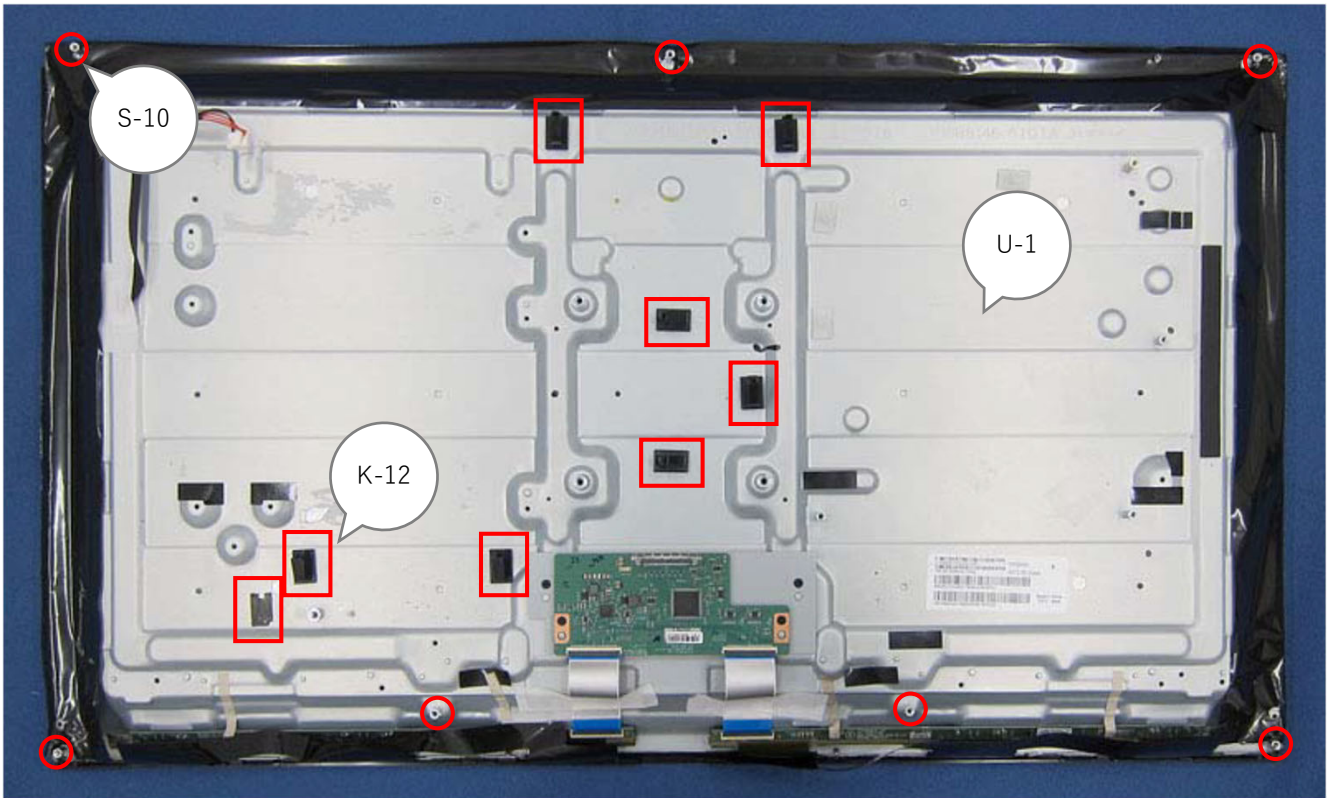


Fastening torque 5-2: $4 \pm 1 \text{kgf} \cdot \text{cm}$

■ Remove the T-CON PWB



Fastening torque SCREW: $3 \pm 1 \text{kgf} \cdot \text{cm}$



U-1 Including : LCD panel, BEZEL, T-CON PWB and FFC Cable












K-20 : Fix on the position in the above photo with CLAMPER.

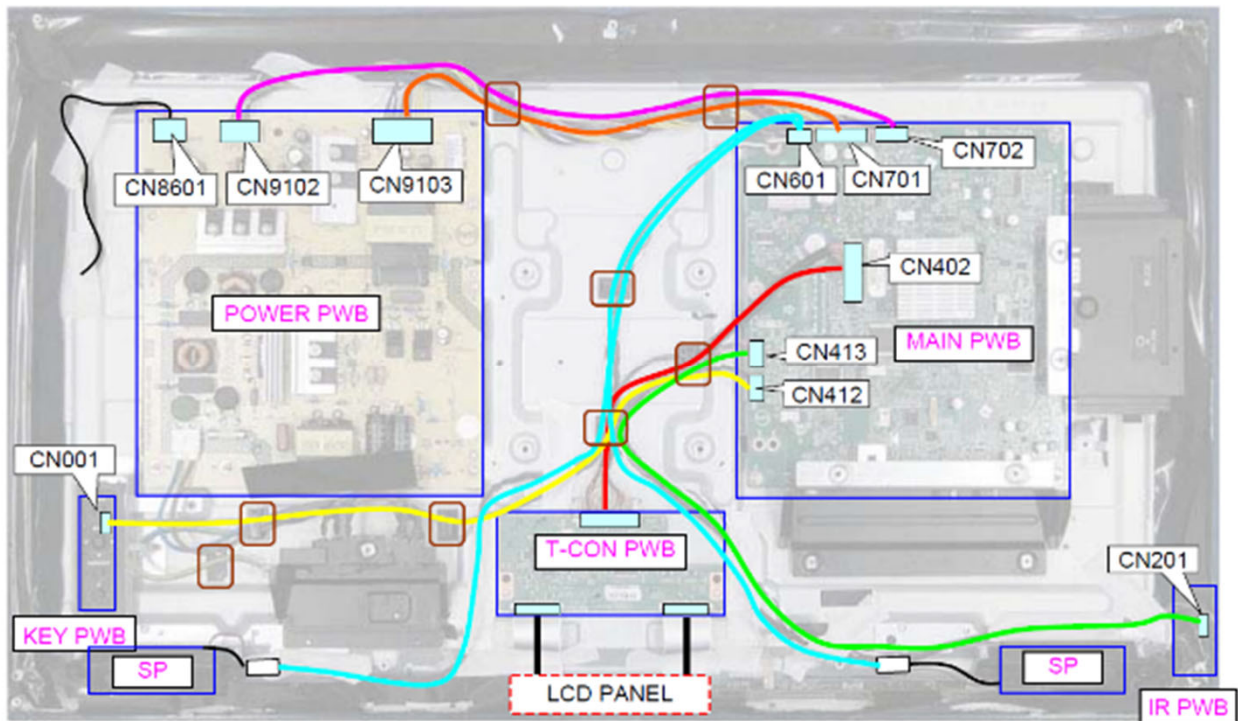


Fastening torque S-10: $4 \pm 1 \text{kgf} \cdot \text{cm}$



4. WIRING DIAGRAM

W-1		MAIN PWB ↔ POWER PWB
W-2		MAIN PWB ↔ POWER PWB
W-3		MAIN PWB ↔ T-CON PWB
W-4		MAIN PWB ↔ KEY PWB
W-5		MAIN PWB ↔ IR PWB
W-6		MAIN PWB ↔ LD PWB
W-7		MAIN PWB ↔ RS232
W-8		POWER PWB ↔ CONVERTER PWB
W-9		MAIN PWB ↔ FAN1
W-10		MAIN PWB ↔ FAN2
W-11		MAIN PWB ↔ SPEAKER



6. Parts List

The spare parts listed in the column "Spare Parts" below are kept available in accordance to legal requirements of EU Regulation 2019/2021 for professional repairer.

Spare Part	Part Name/ Element of Part
a. Internal power board	Power PWB
b. Connectors to connect external equipment	Main PWB
c. Batteries and Accumulators	not applicable
d. DVD/Blue-Ray module	not applicable
e. HD/SSD module	not applicable